



FACT BOOK  
2015/03

# CONTENTS

目次	CONTENTS	・・・1
経営指標（連結）	SELECTED FINANCIAL DATA (CONSOLIDATED)	
収益性	PROFITABILITY	・・・2
安定性	STABILITY	・・・3
生産性・効率性	PRODUCTIVITY AND EFFICIENCY	・・・4
キャッシュ・フロー	CASH FLOWS	・・・5
投資指標	PER SHARE DATA AND OTHERS	・・・6
財務諸表（連結）	FINANCIAL STATEMENTS (CONSOLIDATED)	・・・7
会社概要	CORPORATE INFORMATION	・・・12



## NOTE

### ■ PROFITABILITY

売上高営業利益率	=	営業利益÷売上高×100
売上高経常利益率	=	経常利益÷売上高×100
売上高当期純利益率	=	当期純利益÷売上高×100
自己資本利益率	=	当期純利益÷自己資本×100
総資産利益率	=	当期純利益÷期首・期末平均総資産×100

### ■ STABILITY

流動比率	=	流動資産÷流動負債×100
固定比率	=	固定資産÷自己資本×100
手元流動性比率	=	(現金＋流動資産の有価証券)÷月平均売上高
インタレスト・カバレッジ・レシオ	=	営業キャッシュ・フロー÷利払い
自己資本比率	=	自己資本÷総資産×100

### ■ PRODUCTIVITY AND EFFICIENCY

総資産回転率	=	売上高÷期首・期末平均総資産
有形固定資産回転率	=	売上高÷期首・期末平均有形固定資産

### ■ CASH FLOWS

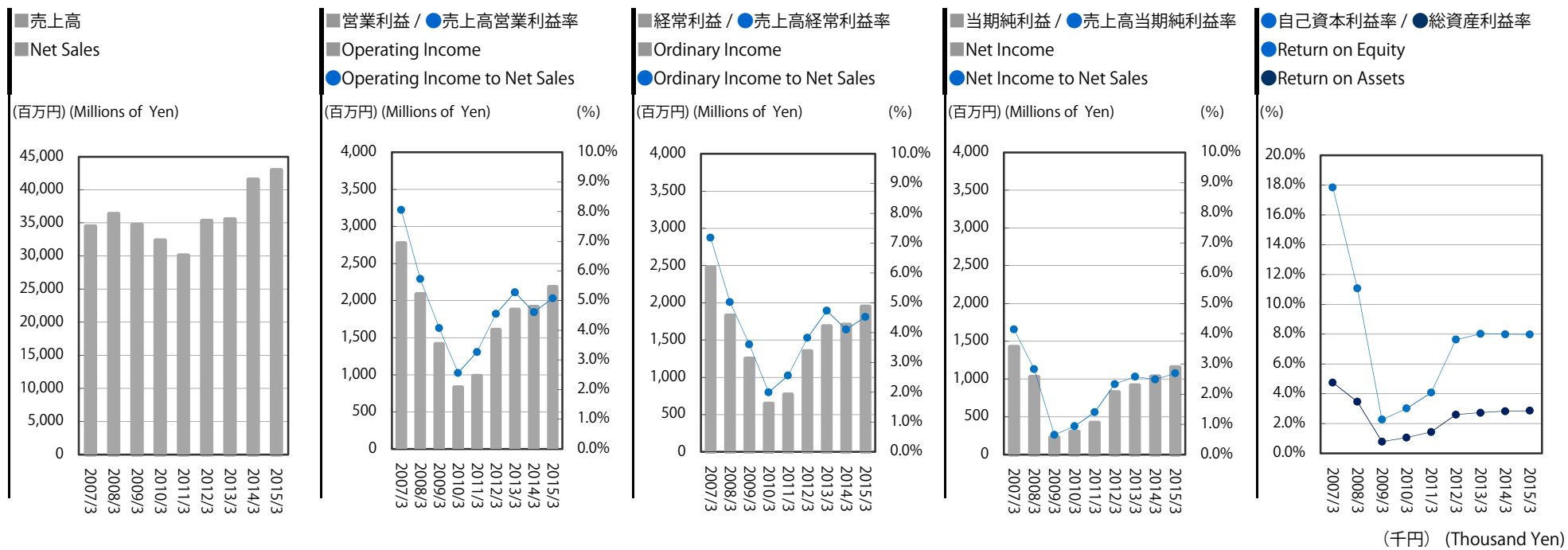
設備投資額	=	有形固定資産＋無形固定資産(取得価格) ※建設仮勘定を除く
-------	---	----------------------------------

### ■ PER SHARE DATA AND OTHERS

1株当たり当期純利益	=	当期純利益÷期首・期末平均発行済株式数
配当性向	=	配当金額÷当期純利益×100
1株当たり純資産	=	期末純資産÷期末発行済株式数
1株当たりキャッシュ・フロー	=	(当期純利益＋減価償却費)÷期首・期末平均発行済株式数
株価収益率	=	期末株価÷1株当たり当期純利益
株価純資産倍率	=	期末株価÷1株当たり純資産

# 経営指標 (連結) SELECTED FINANCIAL DATA (CONSOLIDATED)

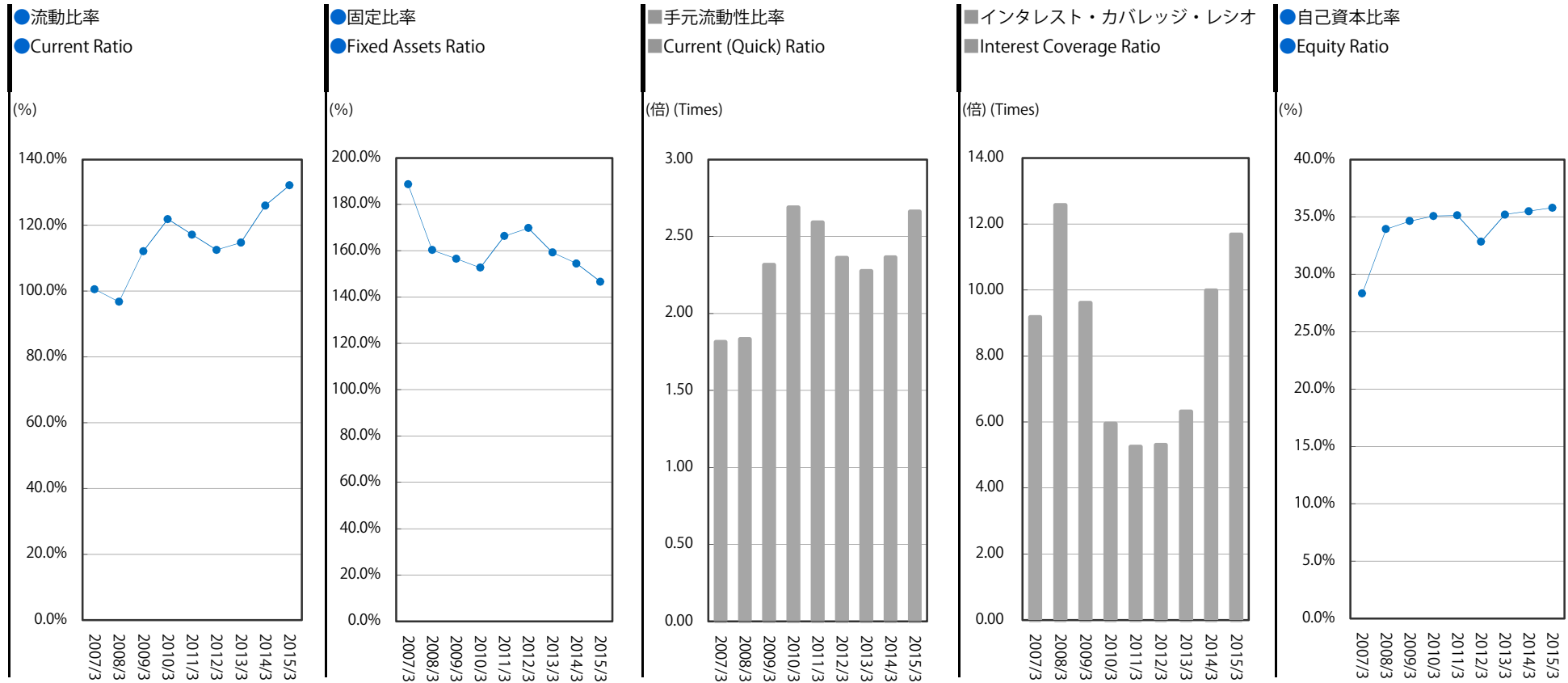
## 収益性 PROFITABILITY



決算期	FISCAL YEAR	2007/3	2008/3	2009/3	2010/3	2011/3	2012/3	2013/3	2014/3	2015/3	増減
売上高	Net Sales	34,470,207	36,378,642	34,707,573	32,359,393	30,109,241	35,315,311	35,574,517	41,572,897	42,990,296	1,417,398
営業利益	Operating Income	2,776,179	2,085,843	1,412,424	828,530	983,215	1,607,465	1,878,190	1,917,173	2,183,361	266,188
売上高営業利益率 (%)	Operating Income to Net Sales (%)	8.1%	5.7%	4.1%	2.6%	3.3%	4.6%	5.3%	4.6%	5.1%	0.5%
経常利益	Ordinary Income	2,477,041	1,828,820	1,250,517	647,277	770,734	1,350,482	1,686,459	1,707,315	1,947,834	240,519
売上高経常利益率 (%)	Ordinary Income to Net Sales (%)	7.2%	5.0%	3.6%	2.0%	2.6%	3.8%	4.7%	4.1%	4.5%	0.4%
当期純利益	Net Income	1,426,945	1,029,001	227,464	303,925	422,032	824,206	918,365	1,034,070	1,156,438	122,368
売上高当期純利益率 (%)	Net Income to Net Sales (%)	4.1%	2.8%	0.7%	0.9%	1.4%	2.3%	2.6%	2.5%	2.7%	0.2%
総資産	Total Assets	29,552,226	30,150,071	28,751,729	29,253,934	29,932,576	33,817,629	33,543,808	39,631,430	41,524,305	1,892,875
純資産	Net Assets	8,369,482	10,229,939	9,956,138	10,259,410	10,514,738	11,104,109	11,807,754	14,066,762	14,882,646	815,883
自己資本利益率 (%)	Return on Equity <ROE> (%)	17.8%	11.1%	2.3%	3.0%	4.1%	7.6%	8.0%	8.0%	8.0%	—
総資産利益率 (%)	Return on Assets <ROA> (%)	4.7%	3.4%	0.8%	1.0%	1.4%	2.6%	2.7%	2.8%	2.8%	—

経営指標 (連結) SELECTED FINANCIAL DATA (CONSOLIDATED)

安定性 STABILITY



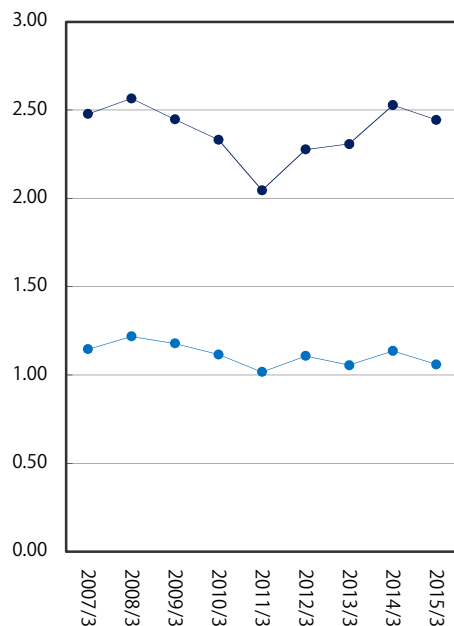
決算期	FISCAL YEAR	2007/3	2008/3	2009/3	2010/3	2011/3	2012/3	2013/3	2014/3	2015/3	増減
流動比率 (%)	Current Ratio (%)	100.5%	96.7%	112.1%	121.9%	117.1%	112.5%	114.8%	126.0%	132.2%	6.1%
固定比率 (%)	Fixed Assets Ratio (%)	188.6%	160.2%	156.5%	152.7%	166.2%	169.7%	159.2%	154.5%	146.6%	△7.9%
手元流動性比率 (倍)	Current (Quick) Ratio (Times)	1.82	1.83	2.32	2.69	2.59	2.36	2.28	2.36	2.66	0.30
インタレスト・カバレッジ・レシオ (倍)	Interest Coverage Ratio (Times)	9.18	12.57	9.61	5.95	5.25	5.30	6.32	9.98	11.68	1.70
自己資本比率 (%)	Equity Ratio (%)	28.3%	33.9%	34.6%	35.1%	35.1%	32.8%	35.2%	35.5%	35.8%	0.3%

# 経営指標 (連結) SELECTED FINANCIAL DATA (CONSOLIDATED)

## 生産性・効率性 PRODUCTIVITY AND EFFICIENCY

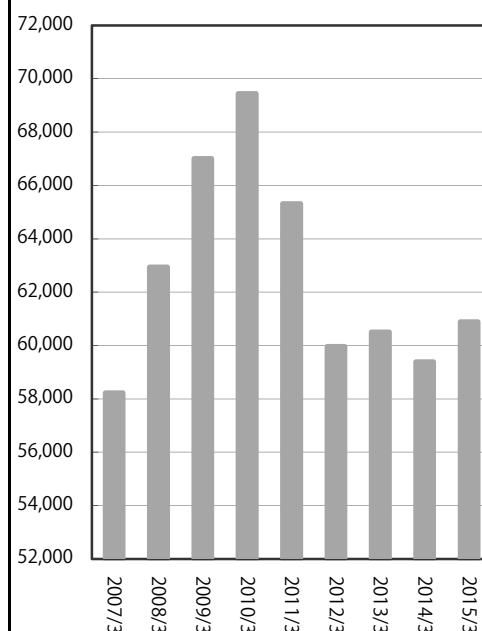
● 総資産回転率 ● 有形固定資産回転率  
 ● Total Assets Turnover  
 ● Tangible Fixed Assets Turnover

(回) (Times)



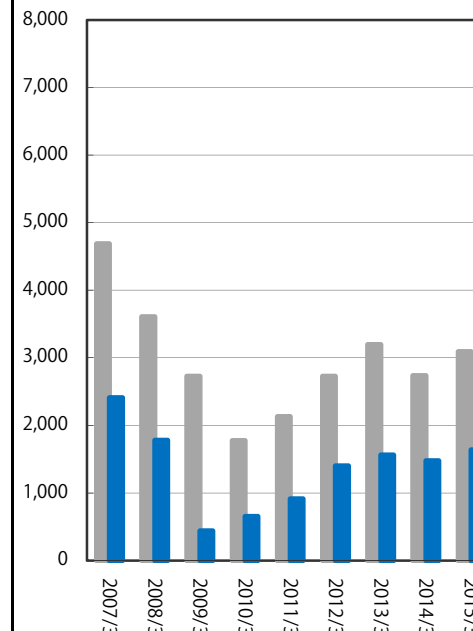
■ 従業員一人当たり売上高  
 ■ Net Sales per Employee

(千円) (Thousand Yen)



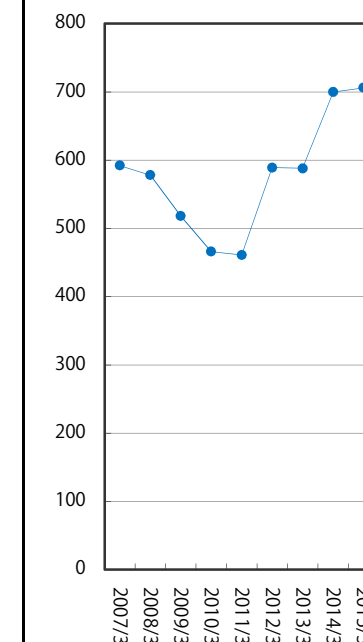
■ 従業員一人当たり営業利益 ■ 当期純利益  
 ■ Operating Income per Employee ■ Net Income per Employee

(千円) (Thousand Yen)



● 従業員数  
 ● Number of Employees

(人) (Persons)

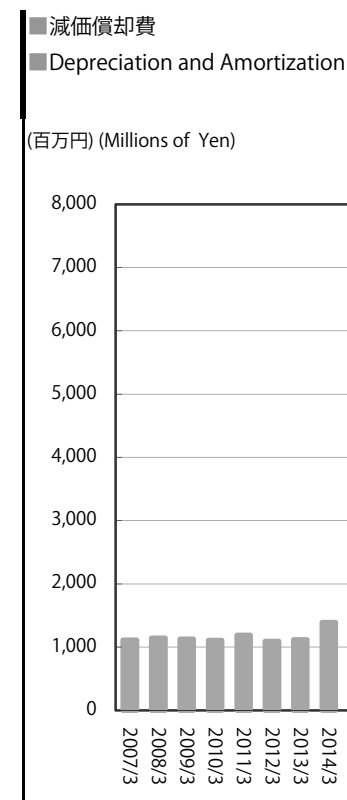
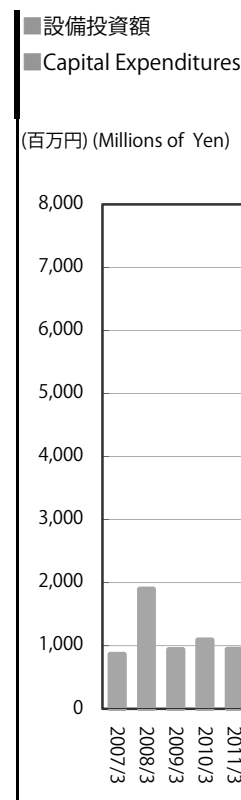
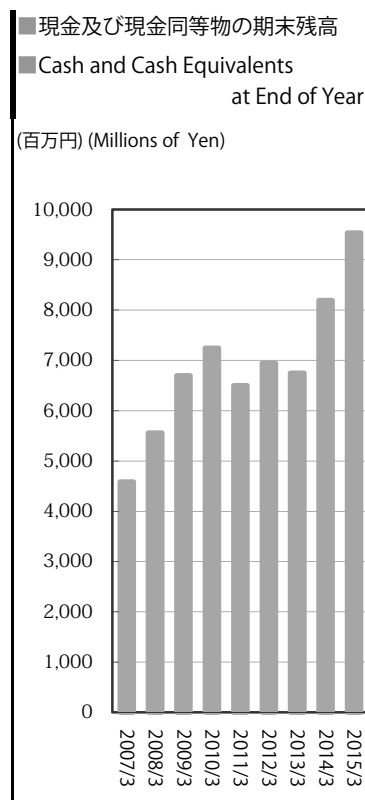
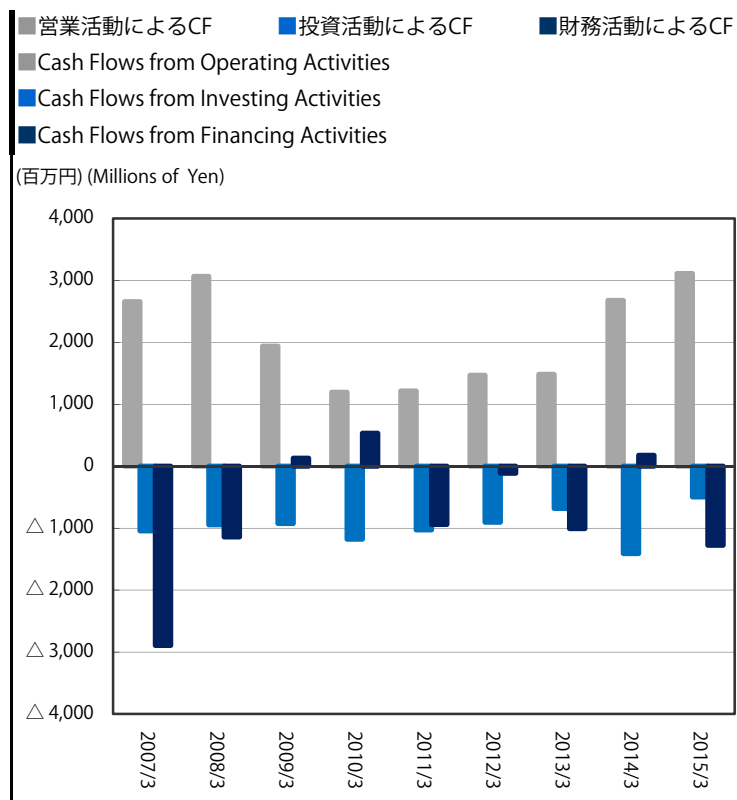


(千円) (Thousand Yen)

決算期	FISCAL YEAR	2007/3	2008/3	2009/3	2010/3	2011/3	2012/3	2013/3	2014/3	2015/3	増減
総資産回転率 (回)	Total Assets Turnover (Times)	1.15	1.22	1.18	1.12	1.02	1.11	1.06	1.14	1.06	△ 0.08
有形固定資産回転率 (回)	Tangible Fixed Assets Turnover (Times)	2.48	2.57	2.45	2.33	2.05	2.28	2.31	2.53	2.44	△ 0.08
従業員一人当たり売上高	Net Sales per Employee	58,226	62,938	67,003	69,440	65,312	59,958	60,500	59,389	60,892	1,502
従業員一人当たり営業利益	Operating Income per Employee	4,689	3,608	2,726	1,777	2,132	2,729	3,194	2,738	3,092	353
従業員一人当たり当期純利益	Net Income per Employee	2,410	1,780	439	652	915	1,399	1,561	1,477	1,638	160
従業員数 (人)	Number of Employees (Persons)	592	578	518	466	461	589	588	700	706	6

# 経営指標 (連結) SELECTED FINANCIAL DATA (CONSOLIDATED)

## キャッシュ・フロー CASH FLOWS

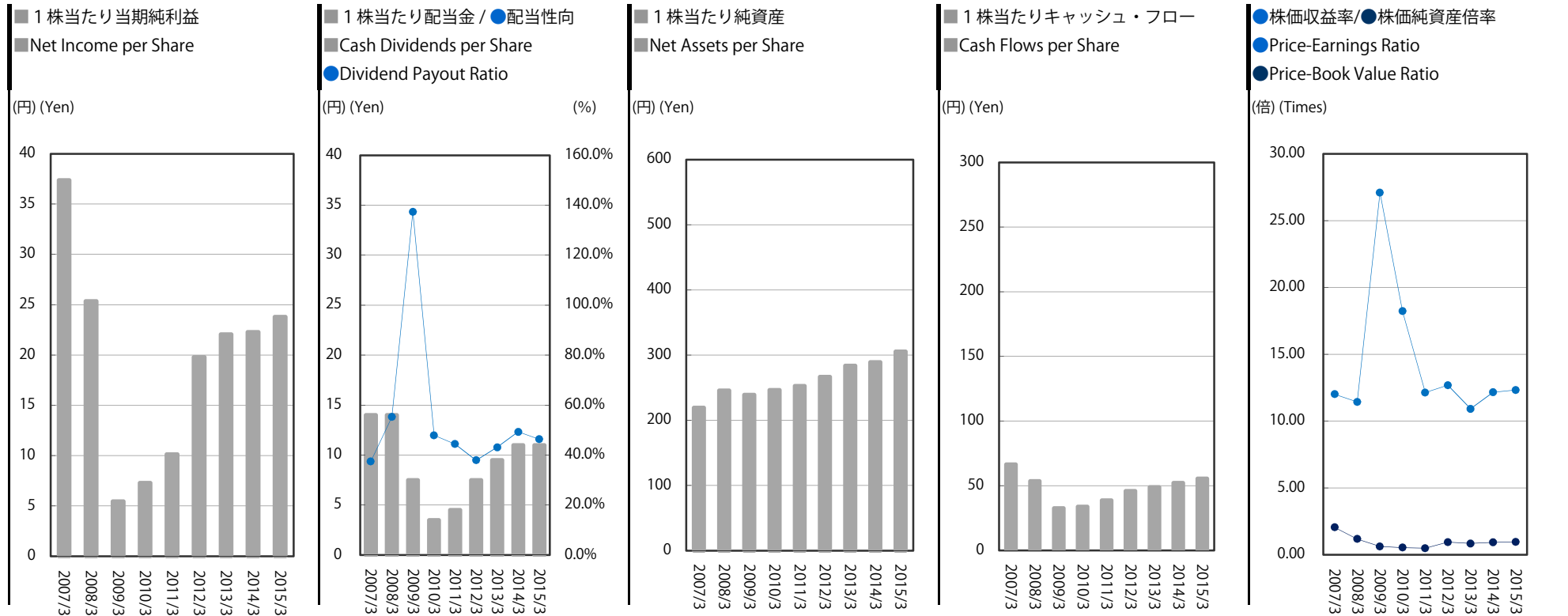


(千円) (Thousand Yen)

決算期	FISCAL YEAR	2007/3	2008/3	2009/3	2010/3	2011/3	2012/3	2013/3	2014/3	2015/3	増減
営業活動によるキャッシュ・フロー	Cash Flows from Operating Activities	2,657,860	3,063,151	1,937,109	1,192,880	1,217,471	1,467,654	1,486,662	2,677,609	3,110,320	432,710
投資活動によるキャッシュ・フロー	Cash Flows from Investing Activities	△ 1,043,396	△ 945,676	△ 925,756	△ 1,174,703	△ 1,026,897	△ 905,280	△ 680,449	△ 1,410,519	△ 492,723	917,795
財務活動によるキャッシュ・フロー	Cash Flows from Financing Activities	△ 2,893,342	△ 1,142,603	129,491	533,006	△ 938,498	△ 113,647	△ 1,008,001	178,338	△ 1,275,623	△ 1,453,962
現金及び現金同等物の期末残高	Cash and Cash Equivalents at End of Year	4,580,941	5,555,813	6,696,659	7,247,842	6,499,918	6,948,645	6,746,856	8,192,285	9,534,258	1,341,972
設備投資額	Capital Expenditures	862,866	1,896,790	940,082	1,090,623	942,503	534,337	650,082	706,036	507,155	△ 198,880
減価償却費	Depreciation and Amortization	1,111,520	1,144,678	1,126,457	1,105,432	1,188,713	1,090,627	1,116,814	1,390,860	1,543,788	152,927

経営指標 (連結) SELECTED FINANCIAL DATA (CONSOLIDATED)

投資指標 PER SHARE DATA AND OTHERS



(円) (Yen)

決算期	FISCAL YEAR	2007/3	2008/3	2009/3	2010/3	2011/3	2012/3	2013/3	2014/3	2015/3	増減
1株当たり当期純利益	Net Income per Share <EPS>	37.37	25.36	5.46	7.30	10.14	19.80	22.06	22.29	23.78	1.49
1株当たり配当金	Cash Dividends per Share	14.00	14.00	7.50	3.50	4.50	7.50	9.50	11.00	11.00	—
配当性向 (%)	Dividend Payout Ratio (%)	37.5%	55.2%	137.4%	47.9%	44.4%	37.9%	43.1%	49.3%	46.3%	△3.0%
1株当たり純資産	Net Assets per Share	219.21	245.73	239.16	246.44	252.58	266.73	283.64	289.26	305.62	16.36
1株当たりキャッシュ・フロー	Cash Flows per Share	66.49	53.58	32.52	33.85	38.69	46.00	48.89	52.26	55.53	3.26
株価収益率 (倍)	Price-Earnings Ratio <PER> (Times)	12.01	11.43	27.09	18.22	12.13	12.68	10.92	12.16	12.32	0.16
株価純資産倍率 (倍)	Price-Book Value Ratio <PBR> (Times)	2.05	1.18	0.62	0.54	0.49	0.94	0.85	0.94	0.96	0.02

# 財務諸表（連結） FINANCIAL STATEMENTS (CONSOLIDATED)

## 貸借対照表 BALANCE SHEETS

(千円) (Thousand Yen)

決算期	FISCAL YEAR		2011/ 3	2012/ 3	2013/ 3	2014/ 3	2015/ 3	
<b>資産の部</b>		<b>Assets</b>						
<b>I 流動資産</b>		<b>I Current Assets</b>						
1	現金及び預金	1 Cash and Deposits	6,499,918	6,948,645	6,746,856	8,192,285	9,534,258	
2	受取手形及び売掛金	2 Notes and Accounts Receivable-Trade	5,103,341	6,899,823	7,038,710	8,446,406	8,853,049	
3	たな卸資産	3 Inventories	397,459	758,058	701,590	961,550	1,093,753	
4	繰越税金資産	4 Deferred Tax Assets	89,120	176,490	152,763	261,180	209,252	
5	その他	5 Other	364,416	190,976	104,381	154,107	143,821	
	貸倒引当金	Allowance for Doubtful Accounts	△ 1,142	△ 1,457	△ 1,187	△ 126,461	△ 101,778	
	<b>流動資産合計</b>	<b>Total Current Assets</b>	<b>12,453,113</b>	<b>41.6%</b> <b>14,972,537</b>	<b>44.3%</b> <b>14,743,114</b>	<b>44.0%</b> <b>17,889,070</b>	<b>45.1%</b> <b>19,732,356</b>	
<b>II 固定資産</b>		<b>II Noncurrent Assets</b>						
<b>1 有形固定資産</b>		<b>1 Property, Plant and Equipment</b>						
(1)	建物及び構築物	(1) Buildings and Structures	6,026,101	5,844,263	5,951,864	5,984,706	5,784,940	
(2)	機械装置及び運搬具	(2) Machinery, Equipment and Vehicles	1,692,095	1,890,981	1,668,245	1,533,011	1,392,592	
(3)	工具、器具及び備品	(3) Tools, Furniture and Fixtures	113,210	117,802	124,737	173,101	177,561	
(4)	土地	(4) Land	5,130,651	5,130,651	5,130,651	5,460,464	5,498,386	
(5)	リース資産	(5) Lease Assets	2,143,246	2,449,349	2,511,578	4,347,980	4,824,741	
(6)	建設仮勘定	(6) Construction in Progress	491,767	—	—	2,000	—	
	<b>有形固定資産合計</b>	<b>Total Property, Plant and Equipment</b>	<b>15,597,072</b>	<b>52.1%</b> <b>15,433,047</b>	<b>45.6%</b> <b>15,387,077</b>	<b>45.8%</b> <b>17,501,264</b>	<b>44.2%</b> <b>17,678,222</b>	
<b>2 無形固定資産</b>		<b>2 Intangible Assets</b>						
(1)	のれん	(1) Goodwill	—	1,514,193	1,428,855	1,905,391	1,732,622	
(2)	その他	(2) Other	99,308	96,848	84,182	98,561	79,513	
	<b>無形固定資産合計</b>	<b>Total Intangible Assets</b>	<b>99,308</b>	<b>0.3%</b> <b>1,611,041</b>	<b>4.8%</b> <b>1,513,037</b>	<b>4.5%</b> <b>2,003,952</b>	<b>5.1%</b> <b>1,812,135</b>	
<b>3 投資その他の資産</b>		<b>3 Investments and Other Assets</b>						
(1)	投資有価証券	(1) Investment Securities	894,569	838,299	976,051	1,213,943	1,362,339	
(2)	繰延税金資産	(2) Deferred Tax Assets	97,927	133,268	91,517	143,149	65,000	
(3)	その他	(3) Other	794,749	833,599	840,962	1,109,599	1,079,131	
	貸倒引当金	Allowance for Doubtful Accounts	△ 4,164	△ 4,164	△ 7,952	△ 241,432	△ 211,277	
	<b>投資その他の資産合計</b>	<b>Total Investments and Other Assets</b>	<b>1,783,081</b>	<b>6.0%</b> <b>1,801,002</b>	<b>5.3%</b> <b>1,900,578</b>	<b>5.7%</b> <b>2,225,260</b>	<b>5.6%</b> <b>2,295,194</b>	
	<b>固定資産合計</b>	<b>Total Noncurrent Assets</b>	<b>17,479,462</b>	<b>58.4%</b> <b>18,845,091</b>	<b>55.7%</b> <b>18,800,693</b>	<b>56.0%</b> <b>21,730,477</b>	<b>54.9%</b> <b>21,785,552</b>	
<b>III 繰延資産</b>		<b>III Deferred Assets</b>						
	株式交付費	Stock Issuance Cost	—	—	—	11,882	6,396	
	<b>繰延資産合計</b>	<b>Total Deferred Assets</b>	<b>—</b>	<b>—</b>	<b>—</b>	<b>11,882</b>	<b>0.0%</b> <b>6,396</b>	
	<b>資産合計</b>	<b>Total Assets</b>	<b>29,932,576</b>	<b>100%</b> <b>33,817,629</b>	<b>100%</b> <b>33,543,808</b>	<b>100%</b> <b>39,631,430</b>	<b>100%</b> <b>41,524,305</b>	



# 財務諸表（連結） FINANCIAL STATEMENTS (CONSOLIDATED)

## 貸借対照表 BALANCE SHEETS

(千円) (Thousand Yen)

決算期	FISCAL YEAR		2011/ 3	2012/ 3	2013/ 3	2014/ 3	2015/ 3	
<b>負債の部</b>		<b>Liabilities</b>						
<b>I 流動負債</b>		<b>I Current Liabilities</b>						
1	支払手形及び買掛金	1 Notes and Accounts Payable-Trade	6,268,249	7,799,733	7,101,518	8,650,528	8,932,135	
2	1年内返済予定の長期借入金	2 Current Portion of Long-Term Loans Payable	3,203,800	3,829,830	3,957,141	3,392,624	3,400,724	
3	リース債務	3 Lease Obligations	214,295	287,879	359,930	622,866	761,536	
4	未払法人税等	4 Income Taxes Payable	177,358	429,700	355,558	455,174	324,399	
5	賞与引当金	5 Provision for Bonuses	140,148	209,721	229,901	305,791	314,162	
6	その他	6 Other	627,400	749,365	843,883	767,040	1,196,746	
<b>流動負債合計</b>		<b>Total Current Liabilities</b>	<b>10,631,252</b>	<b>13,306,231</b>	<b>12,847,933</b>	<b>14,194,024</b>	<b>14,929,705</b>	
			35.5%	39.3%	38.3%	35.8%	36.0%	
<b>II 固定負債</b>		<b>II Noncurrent Liabilities</b>						
1	長期借入金	1 Long-Term Loans Payable	6,152,080	6,335,120	5,852,469	6,585,930	6,519,266	
2	リース債務	2 Lease Obligations	2,079,882	2,363,455	2,385,392	4,075,770	4,524,735	
3	退職給付引当金	3 Provision for Retirement Benefits	543,729	697,768	639,313	—	—	
4	退職給付に係る負債	4 Net Defined Benefit Liability	—	—	—	680,681	639,691	
5	その他	5 Other	10,893	10,945	10,945	28,261	28,261	
<b>固定負債合計</b>		<b>Total Noncurrent Liabilities</b>	<b>8,786,584</b>	<b>9,407,289</b>	<b>8,888,119</b>	<b>11,370,642</b>	<b>11,711,953</b>	
			29.4%	27.8%	26.5%	28.7%	28.2%	
<b>負債合計</b>		<b>Total Liabilities</b>	<b>19,417,837</b>	<b>22,713,520</b>	<b>21,736,053</b>	<b>25,564,667</b>	<b>26,641,659</b>	
			64.9%	67.2%	64.8%	64.5%	64.2%	
<b>純資産の部</b>		<b>Net Assets</b>						
<b>I 株主資本</b>		<b>I Shareholders' Equity</b>						
1	資本金	1 Capital Stock	2,511,350	2,511,350	2,511,350	3,335,810	3,335,810	
2	資本剰余金	2 Capital Surplus	2,505,480	2,505,480	2,505,480	3,329,940	3,329,940	
3	利益剰余金	3 Retained Earnings	5,251,152	5,825,578	6,410,905	6,948,547	7,626,675	
4	自己株式	4 Treasury Stock	△ 13	△ 13	△ 27	△ 27	△ 27	
<b>株主資本合計</b>		<b>Total Shareholders' Equity</b>	<b>10,267,968</b>	<b>10,842,395</b>	<b>11,427,707</b>	<b>13,614,269</b>	<b>14,292,397</b>	
<b>II その他の包括利益累計額</b>		<b>II Accumulated Other Comprehensive Income</b>						
その他有価証券評価差額金		Valuation Difference on Available-for-Sale Securities	246,769	261,713	380,047	470,332	603,310	
退職給付に係る調整累計額		Remeasurements of Defined Benefit Plans	—	—	—	△ 17,839	△ 33,240	
<b>その他の包括利益累計額合計</b>		<b>Total Accumulated Other Comprehensive Income</b>	<b>246,769</b>	<b>261,713</b>	<b>380,047</b>	<b>452,493</b>	<b>570,070</b>	
<b>III 新株予約権</b>		<b>III Subscription Rights to Shares</b>						
			—	—	—	—	20,178	
<b>純資産合計</b>		<b>Total Net Assets</b>	<b>10,514,738</b>	<b>11,104,109</b>	<b>11,807,754</b>	<b>14,066,762</b>	<b>14,882,646</b>	
			35.1%	32.8%	35.2%	35.5%	35.8%	
<b>負債純資産合計</b>		<b>Total Liabilities and Net Assets</b>	<b>29,932,576</b>	<b>33,817,629</b>	<b>33,543,808</b>	<b>39,631,430</b>	<b>41,524,305</b>	
			100%	100%	100%	100%	100%	

# 財務諸表（連結） FINANCIAL STATEMENTS (CONSOLIDATED)

## 損益計算書 STATEMENTS OF INCOME

(千円) (Thousand Yen)

決算期	FISCAL YEAR		2011/ 3	2012/ 3	2013/ 3	2014/ 3	2015/ 3
I 売上高	I Net Sales		30,109,241	35,315,311	35,574,517	41,572,897	42,990,296
II 売上原価	II Cost of Sales		26,820,820	30,994,620	30,831,392	35,843,967	37,157,790
売上総利益	Gross Profit		3,288,420	4,320,690	4,743,125	5,728,930	5,832,505
III 販売費及び一般管理費	III Selling, General and Administrative Expenses						
1 運賃	1 Freightage Expenses		571,085	645,727	625,712	760,505	790,461
2 給料及び手当	2 Salaries and Allowances		629,145	723,827	782,665	974,469	1,020,690
3 賞与引当金繰入額	3 Provision for Bonuses		57,086	75,826	85,975	109,986	116,525
4 退職給付費用	4 Retirement Benefit Expenses		8,611	10,097	10,978	22,242	27,817
5 貸倒引当金繰入額	5 Provision of Allowance for Doubtful Accounts		—	—	—	306,646	△ 13,473
6 のれん償却額	6 Amortization of Goodwill		—	79,694	107,838	172,768	172,768
7 その他	7 Other		1,039,275	1,178,051	1,251,765	1,465,139	1,534,352
営業利益	Operating Income		983,215	1,607,465	1,878,190	1,917,173	2,183,361
IV 営業外収益	IV Non-Operating Income						
1 受取利息	1 Interest Income		364	262	—	—	—
2 受取配当金	2 Dividends Income		22,250	24,567	25,976	26,781	29,932
3 産業立地交付金	3 Subsidy for Industrial Estate		7,741	9,117	15,056	15,074	—
4 保険返戻金	4 Insurance Return		4,800	—	—	—	—
5 保険差益	5 Gain on Insurance Adjustment		—	—	—	9,084	—
6 その他	6 Other		5,111	5,964	5,834	8,760	12,975
V 営業外費用	V Non-Operating Expenses						
1 支払利息	1 Interest Expenses		230,930	277,724	235,317	260,551	268,619
2 その他	2 Other		21,816	19,170	3,279	9,007	9,815
経常利益	Ordinary Income		770,734	1,350,482	1,686,459	1,707,315	1,947,834
VI 特別利益	VI Extraordinary Income						
1 固定資産売却益	1 Gain on Sales of Noncurrent Assets		—	—	357	98	1,304
2 投資有価証券売却益	2 Gain on Sales of Investment Securities		20,897	—	—	41,743	14,737
3 投資有価証券償還益	3 Gain on Redemption of Investment Securities		2,405	—	—	—	—
4 段階取得に係る差益	4 Gain on Step Acquisitions		—	232,875	—	—	—
5 貸倒引当金戻入額	5 Reversal of Allowance for Doubtful Accounts		88	—	—	—	—
VII 特別損失	VII Extraordinary Loss						
1 固定資産売却損	1 Loss on Sales of Noncurrent Assets		88	—	—	—	—
2 固定資産除却損	2 Loss on Retirement of Noncurrent Assets		37,465	108,758	81,512	67,076	10,363
3 投資有価証券評価損	3 Loss on Valuation of Investment Securities		15,692	1,157	28,324	893	31,856
4 会員権評価損	4 Loss on Valuation of Membership		—	29,500	—	—	—
5 資産除去債務会計基準の適用に伴う影響額	5 Loss on Adjustment for Changes of Accounting Standard for Asset Retirement Obligations		4,968	—	—	—	—
6 訴訟和解金	6 Litigation Settlement		—	—	—	—	44,100
7 その他	7 Other		118	331	—	—	—
税金等調整前当期純利益	Income Before Income Taxes		735,792	1,443,610	1,576,979	1,681,186	1,877,555
法人税、住民税及び事業税	Income Taxes-Current		287,087	655,264	629,726	740,817	654,968
法人税等調整額	Income Taxes-Deferred		26,672	△ 35,860	28,887	△ 93,701	66,148
少数株主損益調整前当期純利益	Income Before Minority Interests		422,032	824,206	918,365	1,034,070	1,156,438
VIII 当期純利益	VIII Net Income		422,032	824,206	918,365	1,034,070	1,156,438

# 財務諸表（連結） FINANCIAL STATEMENTS (CONSOLIDATED)

## キャッシュ・フロー計算書 STATEMENTS OF CASH FLOWS

(千円) (Thousand Yen)

決算期	FISCAL YEAR	2011/ 3	2012/ 3	2013/ 3	2014/ 3	2015/ 3
<b>I 営業活動によるキャッシュ・フロー</b>	<b>I Net Cash Provided by (Used in) Operating Activities</b>					
税金等調整前当期純利益	Income Before Income Taxes	735,792	1,443,610	1,576,979	1,681,186	1,877,555
減価償却費	Depreciation and Amortization	1,188,713	1,090,627	1,116,814	1,390,860	1,543,788
のれん償却額	Amortization of Goodwill	—	79,694	107,838	172,768	172,768
訴訟和解金	Litigation Settlement	—	—	—	—	44,100
貸倒引当金の増減額(△は減少)	Increase (Decrease) in Allowance for Doubtful Accounts	△ 88	314	3,518	306,509	△ 54,838
賞与引当金の増減額(△は減少)	Increase (Decrease) in Provision for Bonuses	△ 13,705	37,411	20,179	34,682	8,371
退職給付引当金の増減額(△は減少)	Increase (Decrease) in Provision for Retirement Benefits	13,338	16,784	△ 58,455	—	—
退職給付に係る負債の増減額(△は減少)	Increase (Decrease) in Net Defined Benefit Liability	—	—	—	13,649	25,569
受取利息及び受取配当金	Interest and Dividends Income	△ 22,614	△ 24,829	△ 26,219	△ 27,088	△ 30,261
支払利息	Interest Expenses	230,930	277,724	235,317	260,551	268,619
段階取得に係る差損益 (△は益)	Loss (Gain) on Step Acquisitions	—	△ 232,875	—	—	—
固定資産売却損益(△は益)	Loss (Gain) on Sales of Noncurrent Assets	88	—	△ 357	△ 98	△ 1,304
固定資産除却損	Loss on Retirement of Noncurrent Assets	37,465	108,758	81,512	67,076	10,363
投資有価証券売却損益(△は益)	Loss (Gain) on Sales of Investment Securities	△ 20,897	—	—	△ 41,743	△ 14,737
投資有価証券評価損益(△は益)	Loss (Gain) on Valuation of Investment Securities	15,692	1,157	28,324	893	31,856
会員権評価損	Loss on Valuation of Membership	—	29,500	—	—	—
売上債権の増減額(△は増加)	Decrease (Increase) in Notes and Accounts Receivable-Trade	268,411	△ 1,184,462	△ 54,004	△ 672,055	△ 406,643
たな卸資産の増減額(△は増加)	Decrease (Increase) in Inventories	118,538	△ 236,370	56,467	△ 146,862	△ 132,202
仕入債務の増減額(△は減少)	Increase (Decrease) in Notes and Accounts Payable-Trade	△ 873,717	560,420	△ 698,215	725,428	281,607
未収入金の増減額(△は増加)	Decrease (Increase) in Accounts Receivable-Other	8,239	57,239	1,305	△ 13,481	20,704
未払金の増減額(△は減少)	Increase (Decrease) in Accounts Payable-Other	△ 9,508	84,617	△ 4,062	7,798	15,641
未払費用の増減額(△は減少)	Increase (Decrease) in Accrued Expenses	△ 23,905	△ 2,349	18,375	13,564	16,327
未払消費税等の増減額(△は減少)	Increase (Decrease) in Accrued Consumption Taxes	—	92,631	10,251	26,007	457,288
長期預り金の増減額(△は減少)	Increase (Decrease) in Long-Term Deposits Received	16,831	—	—	—	—
前払費用の増減額(△は増加)	Decrease (Increase) in Prepaid Expenses	18,344	3,699	△ 8,836	△ 6,284	△ 20,986
破産更正債権等の増減額(△は増加)	Decrease (increase) in Claims Provable in Bankruptcy, Claims Provable in Rehabilitation	—	—	—	△ 212,606	30,916
その他	Other	64,854	27,266	△ 6,828	△ 13,789	27,931
小計	Subtotal	1,752,803	2,230,569	2,399,907	3,566,969	4,172,437
利息及び配当金の受取額	Interest and Dividends Income Received	22,620	24,738	26,219	31,279	30,261
利息の支払額	Interest Expenses Paid	△ 232,032	△ 276,786	△ 235,260	△ 268,204	△ 266,282
法人税等の支払額	Income Taxes Paid	△ 325,920	△ 509,367	△ 704,203	△ 652,435	△ 781,996
訴訟和解金の支払額	Litigation Settlement Paid	—	—	—	—	△ 44,100
その他の支出	Other Payments	—	△ 1,500	—	—	—
<b>営業活動によるキャッシュ・フロー</b>	<b>Net Cash Provided by (Used in) Operating Activities</b>	<b>1,217,471</b>	<b>1,467,654</b>	<b>1,486,662</b>	<b>2,677,609</b>	<b>3,110,320</b>

# 財務諸表（連結） FINANCIAL STATEMENTS (CONSOLIDATED)

## キャッシュ・フロー計算書 STATEMENTS OF CASH FLOWS

(千円) (Thousand Yen)

決算期	FISCAL YEAR	2011/ 3	2012/ 3	2013/ 3	2014/ 3	2015/ 3
<b>II 投資活動によるキャッシュ・フロー</b>		<b>II Net Cash Provided by (Used in) Investing Activities</b>				
有形固定資産の取得による支出	Purchase of Property, Plant and Equipment	△ 875,975	△ 517,457	△ 621,607	△ 675,492	△ 479,212
有形固定資産の売却による収入	Proceeds from Sales of Property, Plant and Equipment	0	—	—	—	—
無形固定資産の取得による支出	Purchase of Intangible Assets	△ 66,527	△ 16,880	△ 28,474	△ 30,543	△ 27,942
投資有価証券の取得による支出	Purchase of Investment Securities	△ 13,789	△ 9,796	△ 10,042	△ 109,182	△ 10,993
投資有価証券の売却による収入	Proceeds from Sales of Investment Securities	25,742	—	—	54,045	15,519
貸付金の回収による収入	Collection of Loans Receivable	438	—	—	—	—
保険積立金の積立による支出	Purchase of Insurance Funds	△ 32	—	—	—	—
子会社株式の取得による支出	Purchase of Investments in Subsidiaries	—	—	△ 22,500	—	—
連結の範囲の変更を伴う 子会社株式の取得による支出	Purchase of Investments in Subsidiaries Resulting in Change in Scope of Consolidation	—	△ 363,302	—	△ 687,194	—
その他	Other	△ 96,753	2,156	2,175	37,848	9,905
<b>投資活動によるキャッシュ・フロー</b>	<b>Net Cash Provided by (Used in) Investing Activities</b>	<b>△ 1,026,897</b>	<b>△ 905,280</b>	<b>△ 680,449</b>	<b>△ 1,410,519</b>	<b>△ 492,723</b>
<b>III 財務活動によるキャッシュ・フロー</b>		<b>III Net Cash Provided by (Used in) Financing Activities</b>				
長期借入れによる収入	Proceeds From Long-Term Loans Payable	2,700,000	4,050,000	3,741,000	4,670,000	3,750,000
長期借入金の返済による支出	Repayment of Long-Term Loans Payable	△ 3,303,840	△ 3,662,130	△ 4,096,340	△ 5,101,056	△ 3,808,564
配当金の支払額	Cash Dividends Paid	△ 167,132	△ 250,737	△ 332,754	△ 495,598	△ 534,591
リース債務の返済による支出	Repayments of Lease Obligations	△ 143,868	△ 250,779	△ 319,892	△ 529,534	△ 682,467
長期設備支払手形の支払いによる支出	Payments for Long-Term Notes Payable for Capital Investment	△ 23,643	—	—	—	—
株式の発行による収入	Proceeds from Issuance of Common Stock	—	—	—	1,634,528	—
その他	Other	△ 13	—	△ 14	—	—
<b>財務活動によるキャッシュ・フロー</b>	<b>Net Cash Provided by (Used in) Financing Activities</b>	<b>△ 938,498</b>	<b>△ 113,647</b>	<b>△ 1,008,001</b>	<b>178,338</b>	<b>△ 1,275,623</b>
<b>IV 現金及び現金同等物の増減額(△は減少)</b>	<b>IV Net Increase (Decrease) in Cash and Cash Equivalents</b>	<b>△ 747,924</b>	<b>448,726</b>	<b>△ 201,788</b>	<b>1,445,429</b>	<b>1,341,972</b>
<b>V 現金及び現金同等物の期首残高</b>	<b>V Cash and Cash Equivalents at Beginning of Period</b>	<b>7,247,842</b>	<b>6,499,918</b>	<b>6,948,645</b>	<b>6,746,856</b>	<b>8,192,285</b>
<b>VI 現金及び現金同等物の期末残高</b>	<b>VI Cash and Cash Equivalents at End of Period</b>	<b>6,499,918</b>	<b>6,948,645</b>	<b>6,746,856</b>	<b>8,192,285</b>	<b>9,534,258</b>

# 会社概要 CORPORATE INFORMATION

2015年3月31日現在 / As of March 31, 2015

## ▼CORPORATE INFORMATION

TRADE NAME	Kyoritsu Printing Co.,Ltd.
ESTABLISHED	August 1st, 1980
CAPITAL	3,335,810,000 Yen
NUMBER OF FULL-TIME EMPLOYEES	706
STOCK EXCHANGE LISTED	The First Section of the Tokyo Stock Exchange [7838]
NUMBER OF SHAREHOLDERS	9,427
HEAD OFFICE	36-1, Shimizu-cho, Itabashi-ku, Tokyo 03-5248-7800
OFFICE	Sapporo / Nagoya / Osaka / Takamatsu
PRINTING FACTORY	Honjo First Factory / Honjo Second Factory Honjo Third Factory
BINDING FACTORY	Binding First Factory / Binding Second Factory Binding Third Factory / Binding Fourth Factory



## ▼OFFICERS

CEO	Katsunori Noda
COO	Takashi Kuramochi
DIRECTOR	Tetsuo Nakai
DIRECTOR	Shoya Sato
STANDING AUDITOR	Kenzo Kawaziri
AUDITOR	Hidekazu Kubokawa Jun Kimura
EXECUTIVE OFFICER	Hironori Karino Toshikatsu Hunaki

## ▼会社概要

商号	共立印刷株式会社
設立	1980年8月1日
資本金	33億3,581万円
従業員数	706名
上場取引所	東京証券取引所 市場第一部 [7838]
株主数	9,427名
本社	東京都板橋区清水町36番1号 03-5248-7800
営業所	札幌 / 名古屋 / 大阪 / 高松
印刷工場	本庄第1工場 / 本庄第2工場 本庄第3工場
製本工場	製本第1工場 / 製本第2工場 製本第3工場 / 製本第4工場

## ▼役員

代表取締役会長	野田 勝憲
代表取締役社長	倉持 孝
取締役	中井 哲雄
取締役	佐藤 尚哉
常勤監査役	川尻 建三
監査役	窪川 秀一 木村 純
執行役員	狩野 博紀 舩木 敏勝