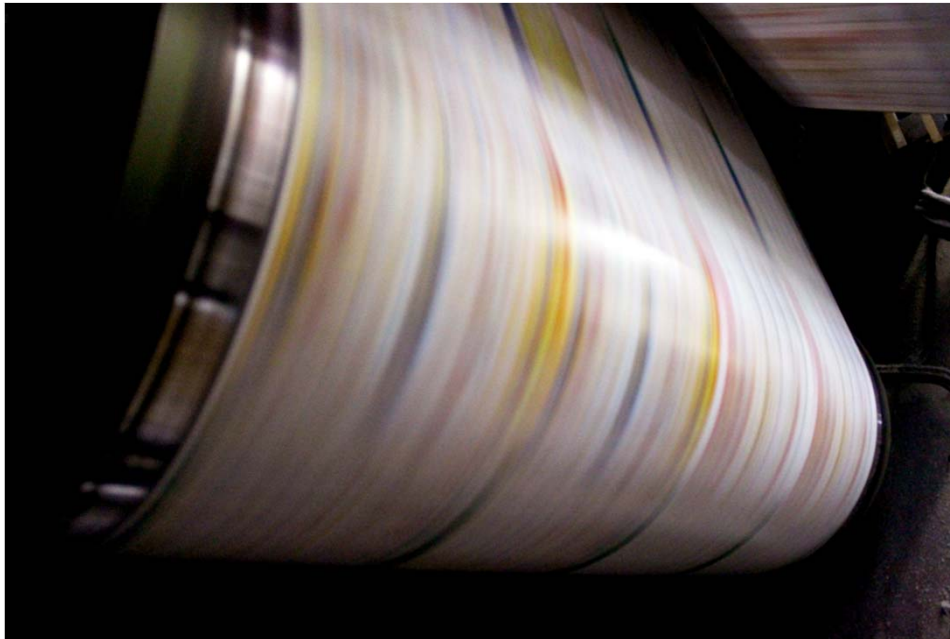




FACT BOOK
2014/03

CONTENTS

目次	CONTENTS	・・・1
経営指標 (連結)	SELECTED FINANCIAL DATA (CONSOLIDATED)	
収益性	PROFITABILITY	・・・2
安定性	STABILITY	・・・3
生産性・効率性	PRODUCTIVITY AND EFFICIENCY	・・・4
キャッシュ・フロー	CASH FLOWS	・・・5
投資指標	PER SHARE DATA AND OTHERS	・・・6
財務諸表 (連結)	FINANCIAL STATEMENTS (CONSOLIDATED)	・・・7
会社概要	CORPORATE INFORMATION	・・・12



NOTE

■ PROFITABILITY

売上高営業利益率	=	営業利益÷売上高×100
売上高経常利益率	=	経常利益÷売上高×100
売上高当期純利益率	=	当期純利益÷売上高×100
自己資本利益率	=	当期純利益÷自己資本×100
総資産利益率	=	当期純利益÷期首・期末平均総資産×100

■ STABILITY

流動比率	=	流動資産÷流動負債×100
固定比率	=	固定資産÷自己資本×100
手元流動性比率	=	(現金＋流動資産の有価証券)÷月平均売上高
インタレスト・カバレッジ・レシオ	=	営業キャッシュ・フロー÷利払い
自己資本比率	=	自己資本÷総資産×100

■ PRODUCTIVITY AND EFFICIENCY

総資産回転率	=	売上高÷期首・期末平均総資産
有形固定資産回転率	=	売上高÷期首・期末平均有形固定資産

■ CASH FLOWS

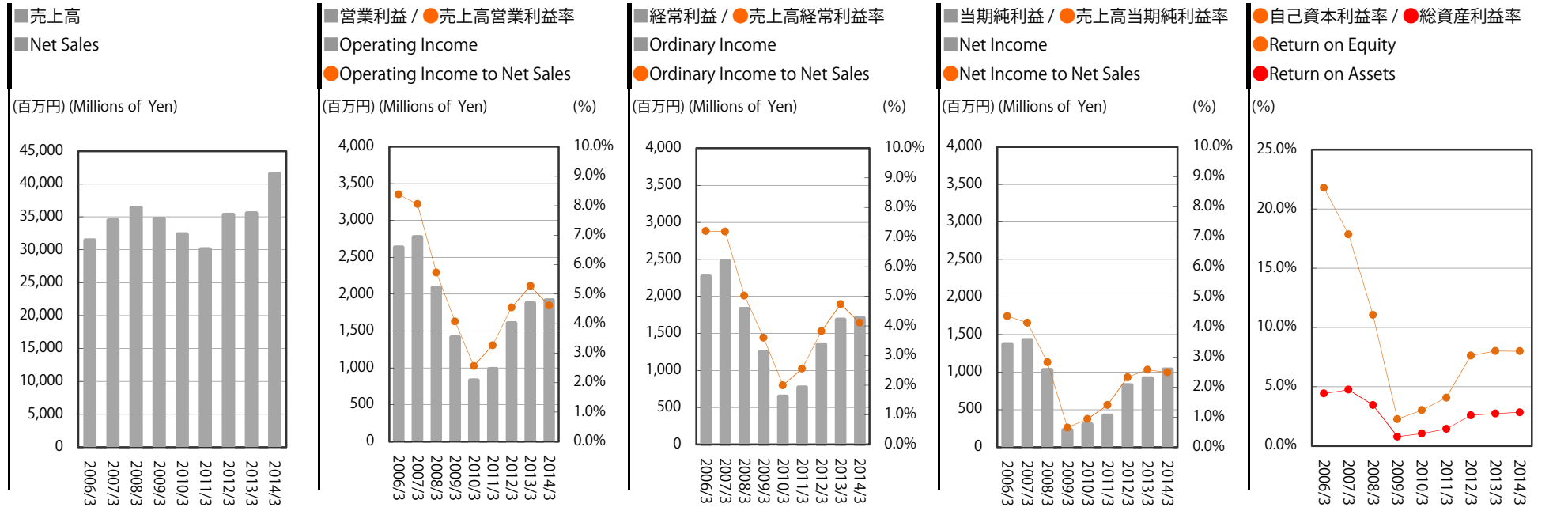
設備投資額	=	有形固定資産＋無形固定資産(取得価格) ※建設仮勘定を除く
-------	---	----------------------------------

■ PER SHARE DATA AND OTHERS

1株当たり当期純利益	=	当期純利益÷期首・期末平均発行済株式数
配当性向	=	配当金額÷当期純利益×100
1株当たり純資産	=	期末純資産÷期末発行済株式数
1株当たりキャッシュ・フロー	=	(当期純利益＋減価償却費)÷期首・期末平均発行済株式数
株価収益率	=	期末株価÷1株当たり当期純利益
株価純資産倍率	=	期末株価÷1株当たり純資産

経営指標 (連結) SELECTED FINANCIAL DATA (CONSOLIDATED)

収益性 PROFITABILITY

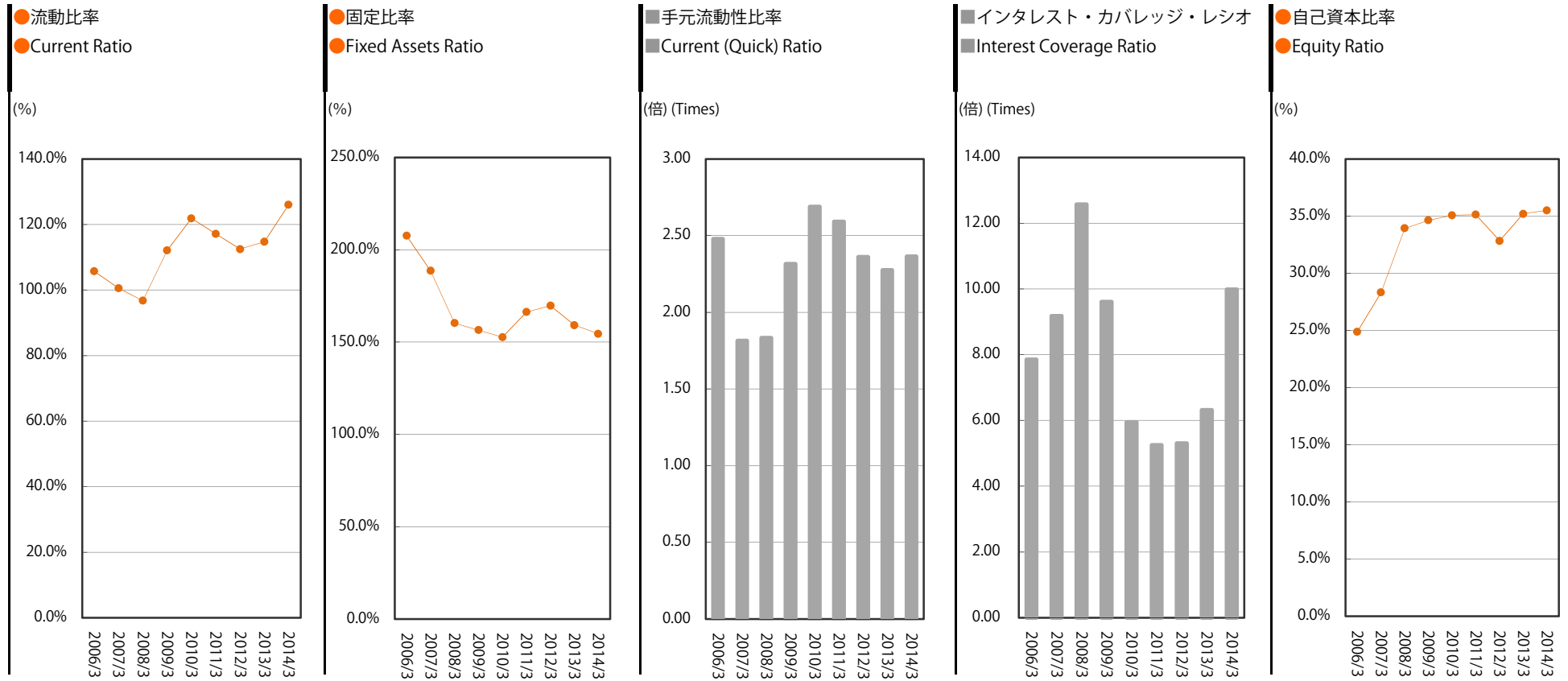


(千円) (Thousand Yen)

決算期	FISCAL YEAR	2006/3	2007/3	2008/3	2009/3	2010/3	2011/3	2012/3	2013/3	2014/3	増減
売上高	Net Sales	31,442,999	34,470,207	36,378,642	34,707,573	32,359,393	30,109,241	35,315,311	35,574,517	41,572,897	5,998,379
営業利益	Operating Income	2,634,916	2,776,179	2,085,843	1,412,424	828,530	983,215	1,607,465	1,878,190	1,917,173	38,983
売上高営業利益率 (%)	Operating Income to Net Sales (%)	8.4%	8.1%	5.7%	4.1%	2.6%	3.3%	4.6%	5.3%	4.6%	△0.7%
経常利益	Ordinary Income	2,265,960	2,477,041	1,828,820	1,250,517	647,277	770,734	1,350,482	1,686,459	1,707,315	20,855
売上高経常利益率 (%)	Ordinary Income to Net Sales (%)	7.2%	7.2%	5.0%	3.6%	2.0%	2.6%	3.8%	4.7%	4.1%	△0.6%
当期純利益	Net Income	1,371,902	1,426,945	1,029,001	227,464	303,925	422,032	824,206	918,365	1,034,070	115,704
売上高当期純利益率 (%)	Net Income to Net Sales (%)	4.4%	4.1%	2.8%	0.7%	0.9%	1.4%	2.3%	2.6%	2.5%	△0.1%
総資産	Total Assets	30,628,083	29,552,226	30,150,071	28,751,729	29,253,934	29,932,576	33,817,629	33,543,808	39,631,430	6,087,621
純資産	Net Assets	7,621,863	8,369,482	10,229,939	9,956,138	10,259,410	10,514,738	11,104,109	11,807,754	14,066,762	2,259,007
自己資本利益率 (%)	Return on Equity <ROE> (%)	21.8%	17.8%	11.1%	2.3%	3.0%	4.1%	7.6%	8.0%	8.0%	—
総資産利益率 (%)	Return on Assets <ROA> (%)	4.4%	4.7%	3.4%	0.8%	1.0%	1.4%	2.6%	2.7%	2.8%	0.1%

経営指標 (連結) SELECTED FINANCIAL DATA (CONSOLIDATED)

安定性 STABILITY



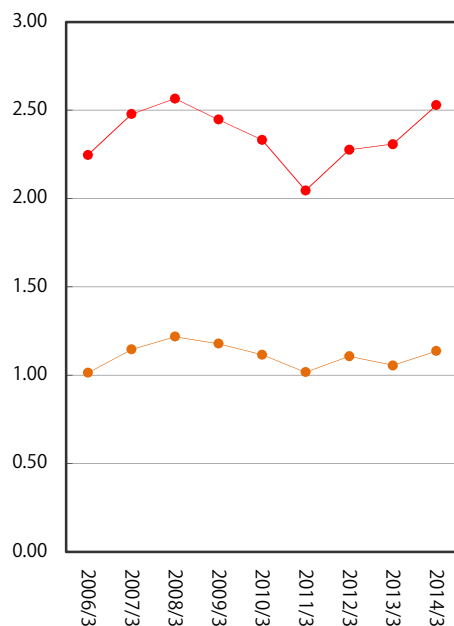
決算期	FISCAL YEAR	2006/3	2007/3	2008/3	2009/3	2010/3	2011/3	2012/3	2013/3	2014/3	増減
流動比率 (%)	Current Ratio (%)	105.7%	100.5%	96.7%	112.1%	121.9%	117.1%	112.5%	114.8%	126.0%	11.3%
固定比率 (%)	Fixed Assets Ratio (%)	207.6%	188.6%	160.2%	156.5%	152.7%	166.2%	169.7%	159.2%	154.5%	△4.7%
手元流動性比率 (倍)	Current (Quick) Ratio (Times)	2.48	1.82	1.83	2.32	2.69	2.59	2.36	2.28	2.36	0.09
インタレスト・カバレッジ・レシオ (倍)	Interest Coverage Ratio (Times)	7.85	9.18	12.57	9.61	5.95	5.25	5.30	6.32	9.98	3.66
自己資本比率 (%)	Equity Ratio (%)	24.9%	28.3%	33.9%	34.6%	35.1%	35.1%	32.8%	35.2%	35.5%	0.3%

経営指標 (連結) SELECTED FINANCIAL DATA (CONSOLIDATED)

生産性・効率性 PRODUCTIVITY AND EFFICIENCY

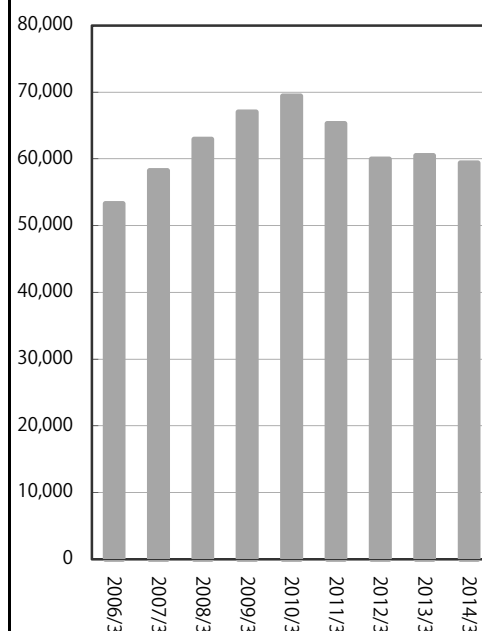
● 総資産回転率 ● 有形固定資産回転率
 Total Assets Turnover
 Tangible Fixed Assets Turnover

(回) (Times)



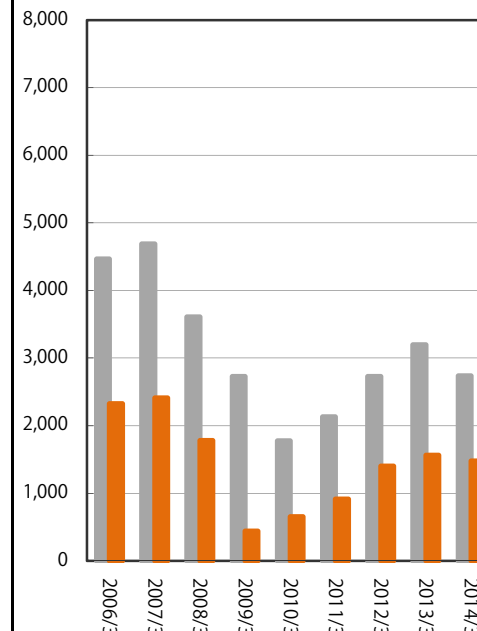
■ 従業員一人当たり売上高
 Net Sales per Employee

(千円) (Thousand Yen)



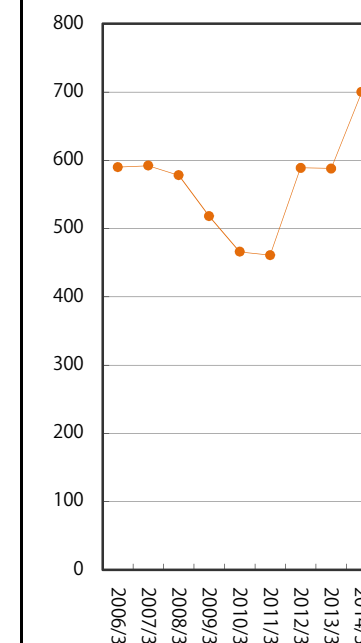
■ 従業員一人当たり営業利益 ■ 当期純利益
 Operating Income per Employee
 Net Income per Employee

(千円) (Thousand Yen)



● 従業員数
 Number of Employees

(人) (Persons)

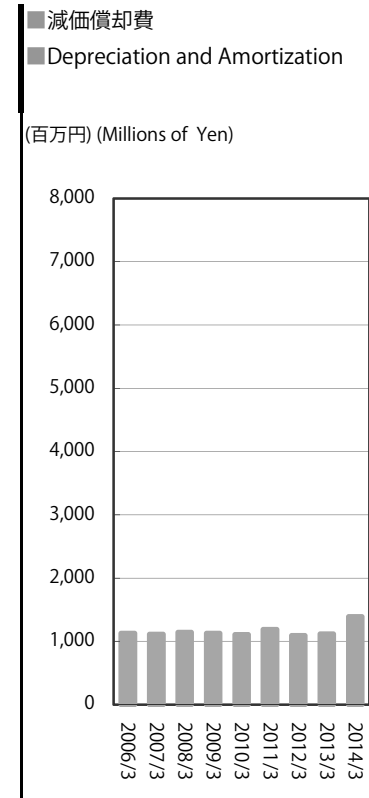
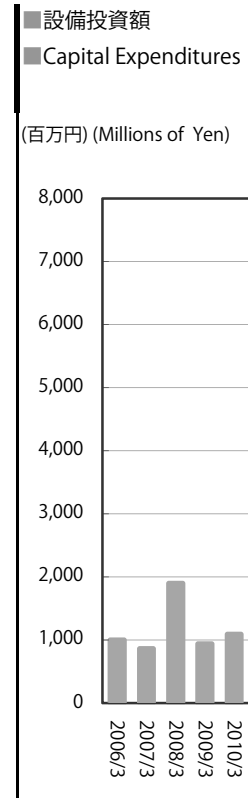
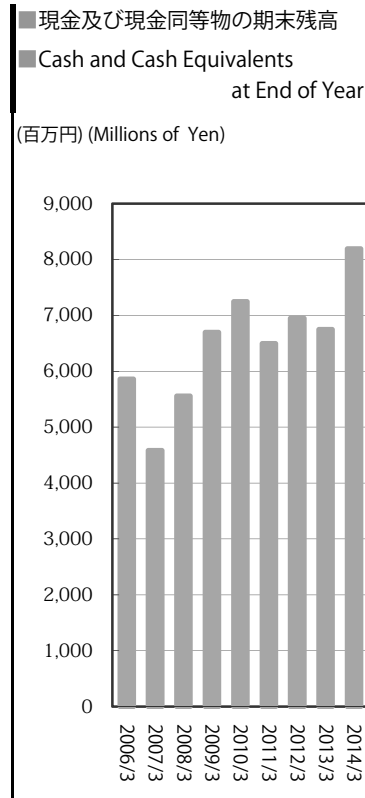
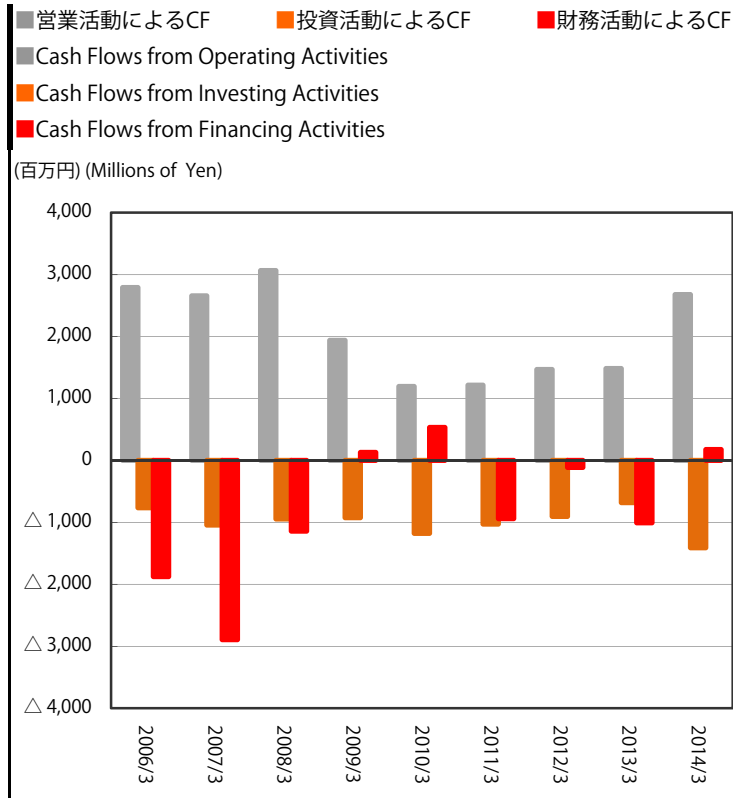


(千円) (Thousand Yen)

決算期	FISCAL YEAR	2006/3	2007/3	2008/3	2009/3	2010/3	2011/3	2012/3	2013/3	2014/3	増減
総資産回転率 (回)	Total Assets Turnover (Times)	1.01	1.15	1.22	1.18	1.12	1.02	1.11	1.06	1.14	0.08
有形固定資産回転率 (回)	Tangible Fixed Assets Turnover (Times)	2.25	2.48	2.57	2.45	2.33	2.05	2.28	2.31	2.53	0.22
従業員一人当たり売上高	Net Sales per Employee	53,293	58,226	62,938	67,003	69,440	65,312	59,958	60,500	59,389	△ 1,111
従業員一人当たり営業利益	Operating Income per Employee	4,465	4,689	3,608	2,726	1,777	2,132	2,729	3,194	2,738	△ 455
従業員一人当たり当期純利益	Net Income per Employee	2,325	2,410	1,780	439	652	915	1,399	1,561	1,477	△ 84
従業員数 (人)	Number of Employees (Persons)	590	592	578	518	466	461	589	588	700	112

経営指標 (連結) SELECTED FINANCIAL DATA (CONSOLIDATED)

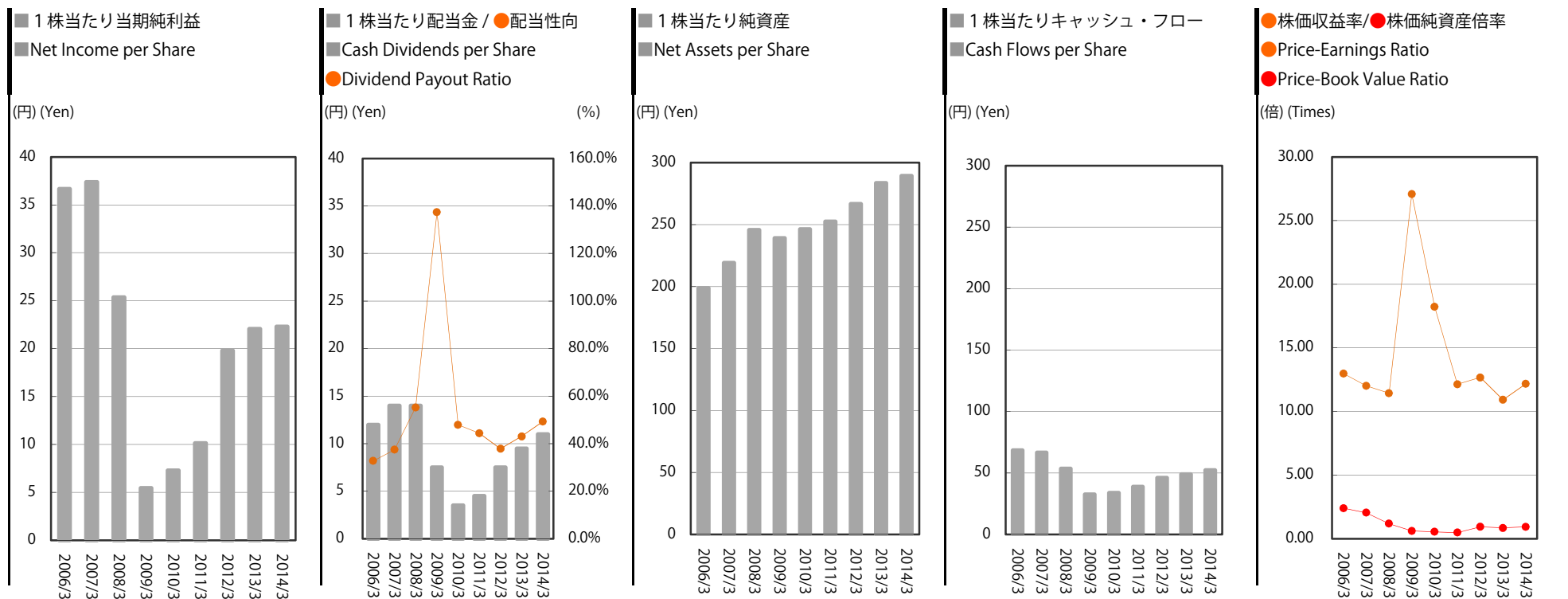
キャッシュ・フロー CASH FLOWS



決算期	FISCAL YEAR	2006/3	2007/3	2008/3	2009/3	2010/3	2011/3	2012/3	2013/3	2014/3	増減
営業活動によるキャッシュ・フロー	Cash Flows from Operating Activities	2,791,229	2,657,860	3,063,151	1,937,109	1,192,880	1,217,471	1,467,654	1,486,662	2,677,609	1,190,946
投資活動によるキャッシュ・フロー	Cash Flows from Investing Activities	△765,582	△1,043,396	△945,676	△925,756	△1,174,703	△1,026,897	△905,280	△680,449	△1,410,519	△730,069
財務活動によるキャッシュ・フロー	Cash Flows from Financing Activities	△1,875,345	△2,893,342	△1,142,603	129,491	533,006	△938,498	△113,647	△1,008,001	178,338	1,186,340
現金及び現金同等物の期末残高	Cash and Cash Equivalents at End of Year	5,859,820	4,580,941	5,555,813	6,696,659	7,247,842	6,499,918	6,948,645	6,746,856	8,192,285	1,445,429
設備投資額	Capital Expenditures	1,001,300	862,866	1,896,790	940,082	1,090,623	942,503	534,337	650,082	706,036	55,953
減価償却費	Depreciation and Amortization	1,128,820	1,111,520	1,144,678	1,126,457	1,105,432	1,188,713	1,090,627	1,116,814	1,390,860	274,045

経営指標 (連結) SELECTED FINANCIAL DATA (CONSOLIDATED)

投資指標 PER SHARE DATA AND OTHERS



決算期	FISCAL YEAR	2006/3	2007/3	2008/3	2009/3	2010/3	2011/3	2012/3	2013/3	2014/3	増減
1株当たり当期純利益	Net Income per Share <EPS>	36.67	37.37	25.36	5.46	7.30	10.14	19.80	22.06	22.29	0.23
1株当たり配当金	Cash Dividends per Share	12.00	14.00	14.00	7.50	3.50	4.50	7.50	9.50	11.00	1.50
配当性向 (%)	Dividend Payout Ratio (%)	32.7%	37.5%	55.2%	137.4%	47.9%	44.4%	37.9%	43.1%	49.3%	6.2%
1株当たり純資産	Net Assets per Share	198.82	219.21	245.73	239.16	246.44	252.58	266.73	283.64	289.26	5.63
1株当たりキャッシュ・フロー	Cash Flows per Share	68.39	66.49	53.58	32.52	33.85	38.69	46.00	48.89	52.26	3.37
株価収益率 (倍)	Price-Earnings Ratio <PER> (Times)	12.98	12.01	11.43	27.09	18.22	12.13	12.68	10.92	12.16	1.24
株価純資産倍率 (倍)	Price-Book Value Ratio <PBR> (Times)	2.39	2.05	1.18	0.62	0.54	0.49	0.94	0.85	0.94	0.09

※ 1株当たりの指標については、2005年5月20日付の株式分割に伴う影響を加味し、遡及修正を行っております。

財務諸表（連結） FINANCIAL STATEMENTS (CONSOLIDATED)

貸借対照表 BALANCE SHEETS

(千円) (Thousand Yen)

決算期	FISCAL YEAR		2010/ 3	2011/ 3	2012/ 3	2013/ 3	2014/ 3	
資産の部		Assets						
I 流動資産		I Current Assets						
1	現金及び預金	1 Cash and Deposits	7,247,842	6,499,918	6,948,645	6,746,856	8,192,285	
2	受取手形及び売掛金	2 Notes and Accounts Receivable-Trade	5,388,685	5,103,341	6,899,823	7,038,710	8,446,406	
3	たな卸資産	3 Inventories	515,997	397,459	758,058	701,590	961,550	
4	繰越税金資産	4 Deferred Tax Assets	117,684	89,120	176,490	152,763	261,180	
5	その他	5 Other	326,678	364,416	190,976	104,381	154,107	
	貸倒引当金	Allowance for Doubtful Accounts	△ 5,095	△ 1,142	△ 1,457	△ 1,187	△ 126,461	
流動資産合計		Total Current Assets	13,591,794	12,453,113	14,972,537	14,743,114	17,889,070	
			46.5%	41.6%	44.3%	44.0%	45.1%	
II 固定資産		II Noncurrent Assets						
1 有形固定資産		1 Property, Plant and Equipment						
(1)	建物及び構築物	(1) Buildings and Structures	5,937,291	6,026,101	5,844,263	5,951,864	5,984,706	
(2)	機械装置及び運搬具	(2) Machinery, Equipment and Vehicles	2,125,614	1,692,095	1,890,981	1,668,245	1,533,011	
(3)	工具、器具及び備品	(3) Tools, Furniture and Fixtures	118,148	113,210	117,802	124,737	173,101	
(4)	土地	(4) Land	5,130,651	5,130,651	5,130,651	5,130,651	5,460,464	
(5)	リース資産	(5) Lease Assets	380,558	2,143,246	2,449,349	2,511,578	4,347,980	
(6)	建設仮勘定	(6) Construction in Progress	155,295	491,767	—	—	2,000	
有形固定資産合計		Total Property, Plant and Equipment	13,847,558	15,597,072	15,433,047	15,387,077	17,501,264	
			47.3%	52.1%	45.6%	45.8%	44.2%	
2 無形固定資産		2 Intangible Assets						
(1)	のれん	(1) Goodwill	—	—	1,514,193	1,428,855	1,905,391	
(2)	その他	(2) Other	79,097	99,308	96,848	84,182	98,561	
無形固定資産合計		Total Intangible Assets	79,097	99,308	1,611,041	1,513,037	2,003,952	
			0.3%	0.3%	4.8%	4.5%	5.1%	
3 投資その他の資産		3 Investments and Other Assets						
(1)	投資有価証券	(1) Investment Securities	831,115	894,569	838,299	976,051	1,213,943	
(2)	繰延税金資産	(2) Deferred Tax Assets	95,657	97,927	133,268	91,517	143,149	
(3)	その他	(3) Other	809,010	794,749	833,599	840,962	1,109,599	
	貸倒引当金	Allowance for Doubtful Accounts	△ 300	△ 4,164	△ 4,164	△ 7,952	△ 241,432	
投資その他の資産合計		Total Investments and Other Assets	1,735,484	1,783,081	1,801,002	1,900,578	2,225,260	
			5.9%	6.0%	5.3%	5.7%	5.6%	
固定資産合計		Total Noncurrent Assets	15,662,140	17,479,462	18,845,091	18,800,693	21,730,477	
			53.5%	58.4%	55.7%	56.0%	54.9%	
III 繰延資産		III Deferred Assets						
	株式交付費	Stock Issuance Cost	—	—	—	—	11,882	
繰延資産合計		Total Deferred Assets	—	—	—	—	11,882	
			0.0%	0.0%	0.0%	0.0%	0.0%	
資産合計		Total Assets	29,253,934	29,932,576	33,817,629	33,543,808	39,631,430	
			100%	100%	100%	100%	100%	

財務諸表（連結） FINANCIAL STATEMENTS (CONSOLIDATED)

貸借対照表 BALANCE SHEETS

(千円) (Thousand Yen)

決算期	FISCAL YEAR		2010/ 3	2011/ 3	2012/ 3	2013/ 3	2014/ 3	
負債の部		Liabilities						
I 流動負債		I Current Liabilities						
1	支払手形及び買掛金	1 Notes and Accounts Payable-Trade	7,141,967	6,268,249	7,799,733	7,101,518	8,650,528	
2	1年内返済予定の長期借入金	2 Current Portion of Long-Term Loans Payable	3,046,160	3,203,800	3,829,830	3,957,141	3,392,624	
3	リース債務	3 Lease Obligations	34,975	214,295	287,879	359,930	622,866	
4	未払法人税等	4 Income Taxes Payable	216,511	177,358	429,700	355,558	455,174	
5	賞与引当金	5 Provision for Bonuses	153,854	140,148	209,721	229,901	305,791	
6	その他	6 Other	560,400	627,400	749,365	843,883	767,040	
流動負債合計		Total Current Liabilities	11,153,868	10,631,252	13,306,231	12,847,933	14,194,024	
II 固定負債		II Noncurrent Liabilities						
1	長期借入金	1 Long-Term Loans Payable	6,913,560	6,152,080	6,335,120	5,852,469	6,585,930	
2	リース債務	2 Lease Obligations	368,703	2,079,882	2,363,455	2,385,392	4,075,770	
3	退職給付引当金	3 Provision for Retirement Benefits	530,391	543,729	697,768	639,313	—	
4	退職給付に係る負債	4 Net Defined Benefit Liability	—	—	—	—	680,681	
5	その他	5 Other	28,000	10,893	10,945	10,945	28,261	
固定負債合計		Total Noncurrent Liabilities	7,840,654	8,786,584	9,407,289	8,888,119	11,370,642	
負債合計		Total Liabilities	18,994,523	19,417,837	22,713,520	21,736,053	25,564,667	
純資産の部		Net Assets						
I 株主資本		I Shareholders' Equity						
1	資本金	1 Capital Stock	2,511,350	2,511,350	2,511,350	2,511,350	3,335,810	
2	資本剰余金	2 Capital Surplus	2,505,480	2,505,480	2,505,480	2,505,480	3,329,940	
3	利益剰余金	3 Retained Earnings	4,995,639	5,251,152	5,825,578	6,410,905	6,948,547	
4	自己株式	4 Treasury Stock	—	△ 13	△ 13	△ 27	△ 27	
株主資本合計		Total Shareholders' Equity	10,012,469	10,267,968	10,842,395	11,427,707	13,614,269	
II その他の包括利益累計額		II Accumulated Other Comprehensive Income						
その他有価証券評価差額金		Valuation Difference on Available-for-Sale Securities	246,940	246,769	261,713	380,047	470,332	
退職給付に係る調整累計額		Remeasurements of Defined Benefit Plans	—	—	—	—	△ 17,839	
その他の包括利益累計額合計		Total Accumulated Other Comprehensive Income	246,940	246,769	261,713	380,047	452,493	
純資産合計		Total Net Assets	10,259,410	10,514,738	11,104,109	11,807,754	14,066,762	
負債純資産合計		Total Liabilities and Net Assets	29,253,934	29,932,576	33,817,629	33,543,808	39,631,430	

財務諸表（連結） FINANCIAL STATEMENTS (CONSOLIDATED)

損益計算書 STATEMENTS OF INCOME

(千円) (Thousand Yen)

決算期	FISCAL YEAR	2010/ 3		2011/ 3		2012/ 3		2013/ 3		2014/ 3	
I 売上高	I Net Sales	32,359,393	100%	30,109,241	100%	35,315,311	100%	35,574,517	100%	41,572,897	100%
II 売上原価	II Cost of Sales	29,155,354	90.1%	26,820,820	89.1%	30,994,620	87.8%	30,831,392	86.7%	35,843,967	86.2%
売上総利益	Gross Profit	3,204,038		3,288,420		4,320,690		4,743,125		5,728,930	
III 販売費及び一般管理費	III Selling, General and Administrative Expenses										
1 運賃	1 Freightage Expenses	577,861		571,085		645,727		625,712		760,505	
2 給料及び手当	2 Salaries and Allowances	611,029		629,145		723,827		782,665		974,469	
3 賞与引当金繰入額	3 Provision for Bonuses	59,778		57,086		75,826		85,975		109,986	
4 退職給付費用	4 Retirement Benefit Expenses	11,733		8,611		10,097		10,978		22,242	
5 減価償却費	5 Depreciation	45,886		—		—		—		—	
6 貸倒引当金繰入額	6 Provision of Allowance for Doubtful Accounts	—		—		—		—		306,646	
7 のれん償却額	7 Amortization of Goodwill	—		—		79,694		107,838		172,768	
8 その他	8 Other	1,069,218		1,039,275		1,178,051		1,251,765		1,465,139	
営業利益	Operating Income	828,530	2.6%	983,215	3.3%	1,607,465	4.6%	1,878,190	5.3%	1,917,173	4.6%
IV 営業外収益	IV Non-Operating Income										
1 受取利息	1 Interest Income	689		364		262		—		—	
2 受取配当金	2 Dividends Income	21,145		22,250		24,567		25,976		26,781	
3 産業立地交付金	3 Subsidy for Industrial Estate	14,299		7,741		9,117		15,056		15,074	
4 保険返戻金	4 Insurance Return	—		4,800		—		—		—	
5 保険差益	5 Gain on Insurance Adjustment	—		—		—		—		9,084	
6 その他	6 Other	4,346		5,111		5,964		5,834		8,760	
V 営業外費用	V Non-Operating Expenses										
1 支払利息	1 Interest Expenses	198,194		230,930		277,724		235,317		260,551	
2 その他	2 Other	23,539		21,816		19,170		3,279		9,007	
経常利益	Ordinary Income	647,277	2.0%	770,734	2.6%	1,350,482	3.8%	1,686,459	4.7%	1,707,315	4.1%
VI 特別利益	VI Extraordinary Income										
1 固定資産売却益	1 Gain on Sales of Noncurrent Assets	—		—		—		357		98	
2 投資有価証券売却益	2 Gain on Sales of Investment Securities	226		20,897		—		—		41,743	
3 投資有価証券償還益	3 Gain on Redemption of Investment Securities	—		2,405		—		—		—	
4 段階取得に係る差益	4 Gain on Step Acquisitions	—		—		232,875		—		—	
5 貸倒引当金戻入額	5 Reversal of Allowance for Doubtful Accounts	63		88		—		—		—	
VII 特別損失	VII Extraordinary Loss										
1 固定資産売却損	1 Loss on Sales of Noncurrent Assets	16		88		—		—		—	
2 固定資産除却損	2 Loss on Retirement of Noncurrent Assets	23,665		37,465		108,758		81,512		67,076	
3 投資有価証券評価損	3 Loss on Valuation of Investment Securities	29,629		15,692		1,157		28,324		893	
4 会員権評価損	4 Loss on Valuation of Membership	—		—		29,500		—		—	
5 賃貸借契約解約損	5 Loss on Cancellation of Leasehold Contracts	18,974		—		—		—		—	
6 資産除去債務会計基準の適用に伴う影響額	6 Loss on Adjustment for Changes of Accounting Standard for Asset Retirement Obligations	—		4,968		—		—		—	
7 その他	7 Other	5,300		118		331		—		—	
税金等調整前当期純利益	Income Before Income Taxes	569,981	1.8%	735,792	2.4%	1,443,610	4.1%	1,576,979	4.4%	1,681,186	4.0%
法人税、住民税及び事業税	Income Taxes-Current	265,517		287,087		655,264		629,726		740,817	
法人税等調整額	Income Taxes-Deferred	537		26,672		△ 35,860		28,887		△ 93,701	
少数株主損益調整前当期純利益	Income Before Minority Interests	—		422,032	1.4%	824,206	2.3%	918,365	2.6%	1,034,070	2.5%
VIII 当期純利益	VIII Net Income	303,925	0.9%	422,032	1.4%	824,206	2.3%	918,365	2.6%	1,034,070	2.5%

財務諸表（連結） FINANCIAL STATEMENTS (CONSOLIDATED)

キャッシュ・フロー計算書 STATEMENTS OF CASH FLOWS

(千円) (Thousand Yen)

決算期	FISCAL YEAR	2010/ 3	2011/ 3	2012/ 3	2013/ 3	2014/ 3
I 営業活動によるキャッシュ・フロー		I Net Cash Provided by (Used in) Operating Activities				
税金等調整前当期純利益	Income Before Income Taxes	569,981	735,792	1,443,610	1,576,979	1,681,186
減価償却費	Depreciation and Amortization	1,105,432	1,188,713	1,090,627	1,116,814	1,390,860
のれん償却額	Amortization of Goodwill	—	—	79,694	107,838	172,768
貸倒引当金の増減額(△は減少)	Increase (Decrease) in Allowance for Doubtful Accounts	2,885	△ 88	314	3,518	306,509
賞与引当金の増減額(△は減少)	Increase (Decrease) in Provision for Bonuses	△ 13,183	△ 13,705	37,411	20,179	34,682
退職給付引当金の増減額(△は減少)	Increase (Decrease) in Provision for Retirement Benefits	13,434	13,338	16,784	△ 58,455	—
退職給付に係る負債の増減額(△は減少)	Increase (Decrease) in Net Defined Benefit Liability	—	—	—	—	13,649
受取利息及び受取配当金	Interest and Dividends Income	△ 21,834	△ 22,614	△ 24,829	△ 26,219	△ 27,088
支払利息	Interest Expenses	198,194	230,930	277,724	235,317	260,551
段階取得に係る差損益 (△は益)	Loss (Gain) on Step Acquisitions	—	—	△ 232,875	—	—
固定資産売却損益(△は益)	Loss (Gain) on Sales of Noncurrent Assets	16	88	—	△ 357	△ 98
固定資産除却損	Loss on Retirement of Noncurrent Assets	23,665	37,465	108,758	81,512	67,076
投資有価証券売却損益(△は益)	Loss (Gain) on Sales of Investment Securities	△ 226	△ 20,897	—	—	△ 41,743
投資有価証券評価損益(△は益)	Loss (Gain) on Valuation of Investment Securities	29,629	15,692	1,157	28,324	893
会員権評価損	Loss on Valuation of Membership	—	—	29,500	—	—
売上債権の増減額(△は増加)	Decrease (Increase) in Notes and Accounts Receivable-Trade	115,561	268,411	△ 1,184,462	△ 54,004	△ 672,055
たな卸資産の増減額(△は増加)	Decrease (Increase) in Inventories	40,025	118,538	△ 236,370	56,467	△ 146,862
仕入債務の増減額(△は減少)	Increase (Decrease) in Notes and Accounts Payable-Trade	△ 473,775	△ 873,717	560,420	△ 698,215	725,428
未収入金の増減額(△は増加)	Decrease (Increase) in Accounts Receivable-Other	19,029	8,239	57,239	1,305	△ 13,481
未払金の増減額(△は減少)	Increase (Decrease) in Accounts Payable-Other	△ 40,696	△ 9,508	84,617	△ 4,062	7,798
未払費用の増減額(△は減少)	Increase (Decrease) in Accrued Expenses	10,420	△ 23,905	△ 2,349	18,375	13,564
未払消費税等の増減額(△は減少)	Increase (Decrease) in Accrued Consumption Taxes	△ 48,350	—	92,631	10,251	26,007
長期預り金の増減額(△は減少)	Increase (Decrease) in Long-Term Deposits Received	△ 37,985	16,831	—	—	—
前払費用の増減額(△は増加)	Decrease (Increase) in Prepaid Expenses	9,730	18,344	3,699	△ 8,836	△ 6,284
破産更正債権等の増減額(△は増加)	Decrease (increase) in Claims Provable in Bankruptcy, Claims Provable in Rehabilitation	—	—	—	—	△ 212,606
その他	Other	△ 17,150	64,854	27,266	△ 6,828	△ 13,789
小計	Subtotal	1,484,805	1,752,803	2,230,569	2,399,907	3,566,969
利息及び配当金の受取額	Interest and Dividends Income Received	21,847	22,620	24,738	26,219	31,279
利息の支払額	Interest Expenses Paid	△ 200,605	△ 232,032	△ 276,786	△ 235,260	△ 268,204
法人税等の支払額	Income Taxes Paid	△ 113,167	△ 325,920	△ 509,367	△ 704,203	△ 652,435
その他の支出	Other Payments	—	—	△ 1,500	—	—
営業活動によるキャッシュ・フロー	Net Cash Provided by (Used in) Operating Activities	1,192,880	1,217,471	1,467,654	1,486,662	2,677,609

財務諸表（連結） FINANCIAL STATEMENTS (CONSOLIDATED)

キャッシュ・フロー計算書 STATEMENTS OF CASH FLOWS

(千円) (Thousand Yen)

決算期	FISCAL YEAR	2010/ 3	2011/ 3	2012/ 3	2013/ 3	2014/ 3
II 投資活動によるキャッシュ・フロー		II Net Cash Provided by (Used in) Investing Activities				
有形固定資産の取得による支出	Purchase of Property, Plant and Equipment	△ 1,128,669	△ 875,975	△ 517,457	△ 621,607	△ 675,492
有形固定資産の売却による収入	Proceeds from Sales of Property, Plant and Equipment	10	0	—	—	—
無形固定資産の取得による支出	Purchase of Intangible Assets	△ 22,713	△ 66,527	△ 16,880	△ 28,474	△ 30,543
投資有価証券の取得による支出	Purchase of Investment Securities	△ 9,249	△ 13,789	△ 9,796	△ 10,042	△ 109,182
投資有価証券の売却による収入	Proceeds from Sales of Investment Securities	891	25,742	—	—	54,045
貸付金の回収による収入	Collection of Loans Receivable	439	438	—	—	—
保険積立金の積立による支出	Purchase of Insurance Funds	△ 32	△ 32	—	—	—
子会社株式の取得による支出	Purchase of Investments in Subsidiaries	—	—	—	△ 22,500	0
連結の範囲の変更を伴う 子会社株式の取得による支出	Purchase of Investments in Subsidiaries Resulting in Change in Scope of Consolidation	—	—	△ 363,302	—	△ 687,194
その他	Other	△ 15,377	△ 96,753	2,156	2,175	37,848
投資活動によるキャッシュ・フロー		△ 1,174,703	△ 1,026,897	△ 905,280	△ 680,449	△ 1,410,519
III 財務活動によるキャッシュ・フロー		III Net Cash Provided by (Used in) Financing Activities				
長期借入れによる収入	Proceeds From Long-Term Loans Payable	3,900,000	2,700,000	4,050,000	3,741,000	4,670,000
長期借入金の返済による支出	Repayment of Long-Term Loans Payable	△ 3,026,880	△ 3,303,840	△ 3,662,130	△ 4,096,340	△ 5,101,056
配当金の支払額	Cash Dividends Paid	△ 167,214	△ 167,132	△ 250,737	△ 332,754	△ 495,598
リース債務の返済による支出	Repayments of Lease Obligations	△ 2,863	△ 143,868	△ 250,779	△ 319,892	△ 529,534
長期設備支払手形の支払いによる支出	Payments for Long-Term Notes Payable for Capital Investment	△ 92,602	△ 23,643	—	—	—
長期設備未払金の支払いによる支出	Payments for Accrued Amount Payable for Capital Investment	△ 77,433	—	—	—	—
株式の発行による収入	Proceeds from Issuance of Common Stock	—	—	—	—	1,634,528
その他	Other	—	△ 13	—	△ 14	—
財務活動によるキャッシュ・フロー		533,006	△ 938,498	△ 113,647	△ 1,008,001	178,338
IV 現金及び現金同等物の増減額(△は減少)	IV Net Increase (Decrease) in Cash and Cash Equivalents	551,183	△ 747,924	448,726	△ 201,788	1,445,429
V 現金及び現金同等物の期首残高	V Cash and Cash Equivalents at Beginning of Period	6,696,659	7,247,842	6,499,918	6,948,645	6,746,856
VI 現金及び現金同等物の期末残高	VI Cash and Cash Equivalents at End of Period	7,247,842	6,499,918	6,948,645	6,746,856	8,192,285

会社概要 CORPORATE INFORMATION

2014年3月31日現在 / As of March 31, 2014

▼CORPORATE INFORMATION

TRADE NAME	Kyoritsu Printing Co.,Ltd.
ESTABLISHED	August 1st, 1980
CAPITAL	3,335,810,000 Yen
NUMBER OF FULL-TIME EMPLOYEES	700
STOCK EXCHANGE LISTED	The First Section of the Tokyo Stock Exchange [7838]
NUMBER OF SHAREHOLDERS	7,746
HEAD OFFICE	36-1, Shimizu-cho, Itabashi-ku, Tokyo 03-5248-7800
OFFICE	Sapporo / Nagoya / Osaka / Takamatsu
PRINTING FACTORY	Honjo First Factory / Honjo Second Factory Honjo Third Factory
BINDING FACTORY	Binding First Factory / Binding Second Factory Binding Third Factory



▼OFFICERS

CEO	Katsunori Noda
COO	Takashi Kuramochi
DIRECTOR	Tetsuo Nakai
DIRECTOR	Shoya Sato
STANDING AUDITOR	Kenzo Kawaziri
AUDITOR	Hidekazu Kubokawa Jun Kimura
EXECUTIVE OFFICER	Kiyomi Hirakawa Hironori Karino Toshikatsu Hunaki

▼会社概要

商号	共立印刷株式会社
設立	1980年8月1日
資本金	33億3,581万円
従業員数	700名
上場取引所	東京証券取引所 市場第一部 [7838]
株主数	7,746名
本社	東京都板橋区清水町36番1号 03-5248-7800
営業所	札幌 / 名古屋 / 大阪 / 高松
印刷工場	本庄第1工場 / 本庄第2工場 本庄第3工場
製本工場	製本第1工場 / 製本第2工場 製本第3工場

▼役員

代表取締役会長	野田 勝憲
代表取締役社長	倉持 孝
取締役	中井 哲雄
取締役	佐藤 尚哉
常勤監査役	川尻 建三
監査役	窪川 秀一 木村 純
執行役員	平川 清三 狩野 博紀 船木 敏勝