

FACT BOOK
2018/03

CONTENTS

目次	CONTENTS	・・・1
経営指標 (連結)	SELECTED FINANCIAL DATA (CONSOLIDATED)	
収益性	PROFITABILITY	・・・2
安定性	STABILITY	・・・3
生産性・効率性	PRODUCTIVITY AND EFFICIENCY	・・・4
キャッシュ・フロー	CASH FLOWS	・・・5
投資指標	PER SHARE DATA AND OTHERS	・・・6
財務諸表 (連結)	FINANCIAL STATEMENTS (CONSOLIDATED)	・・・7
会社概要	CORPORATE INFORMATION	・・・12



NOTE

■ PROFITABILITY

売上高営業利益率	=	営業利益÷売上高×100
売上高経常利益率	=	経常利益÷売上高×100
売上高当期純利益率	=	当期純利益÷売上高×100
自己資本利益率	=	当期純利益÷期首・期末平均自己資本×100
総資産利益率	=	当期純利益÷期首・期末平均総資産×100

■ STABILITY

流動比率	=	流動資産÷流動負債×100
固定比率	=	固定資産÷自己資本×100
手元流動性比率	=	(現金＋流動資産の有価証券)÷月平均売上高
インタレスト・カバレッジ・レシオ	=	営業キャッシュ・フロー÷利払い
自己資本比率	=	自己資本÷総資産×100

■ PRODUCTIVITY AND EFFICIENCY

総資産回転率	=	売上高÷期首・期末平均総資産
有形固定資産回転率	=	売上高÷期首・期末平均有形固定資産

■ CASH FLOWS

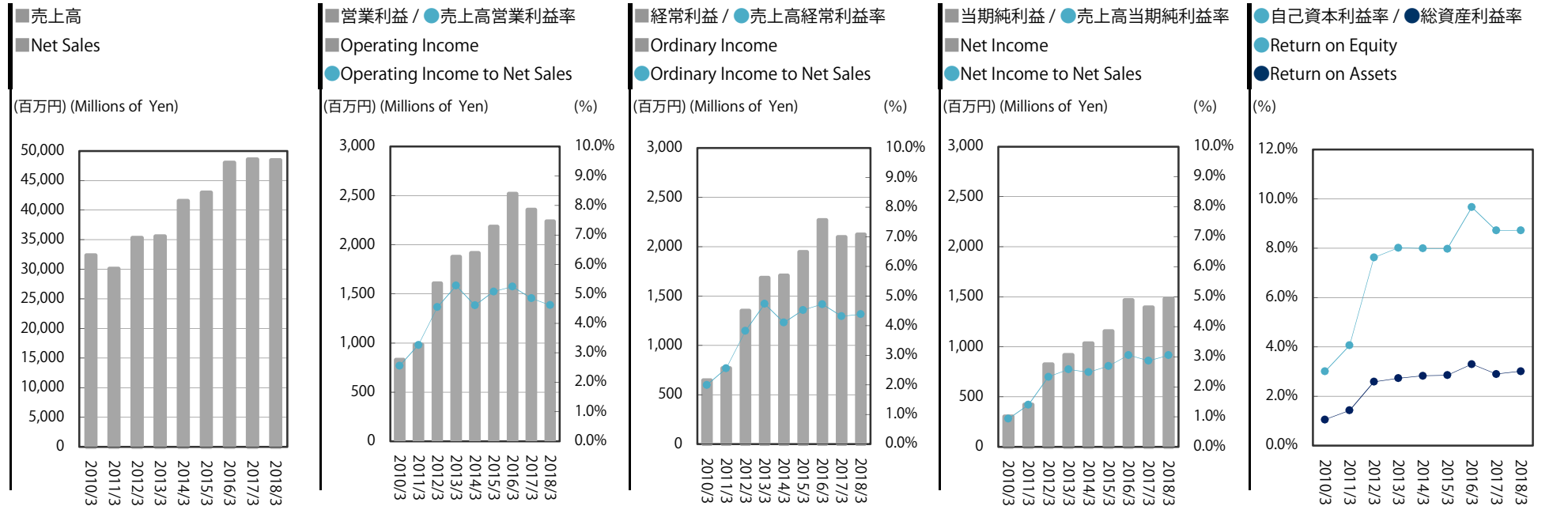
設備投資額	=	有形固定資産＋無形固定資産(取得価格) ※建設仮勘定を除く
-------	---	----------------------------------

■ PER SHARE DATA AND OTHERS

1株当たり当期純利益	=	当期純利益÷期首・期末平均発行済株式数
配当性向	=	配当金額÷当期純利益×100
1株当たり純資産	=	期末純資産÷期末発行済株式数
1株当たりキャッシュ・フロー	=	(当期純利益＋減価償却費)÷期首・期末平均発行済株式数
株価収益率	=	期末株価÷1株当たり当期純利益
株価純資産倍率	=	期末株価÷1株当たり純資産

経営指標 (連結) SELECTED FINANCIAL DATA (CONSOLIDATED)

収益性 PROFITABILITY

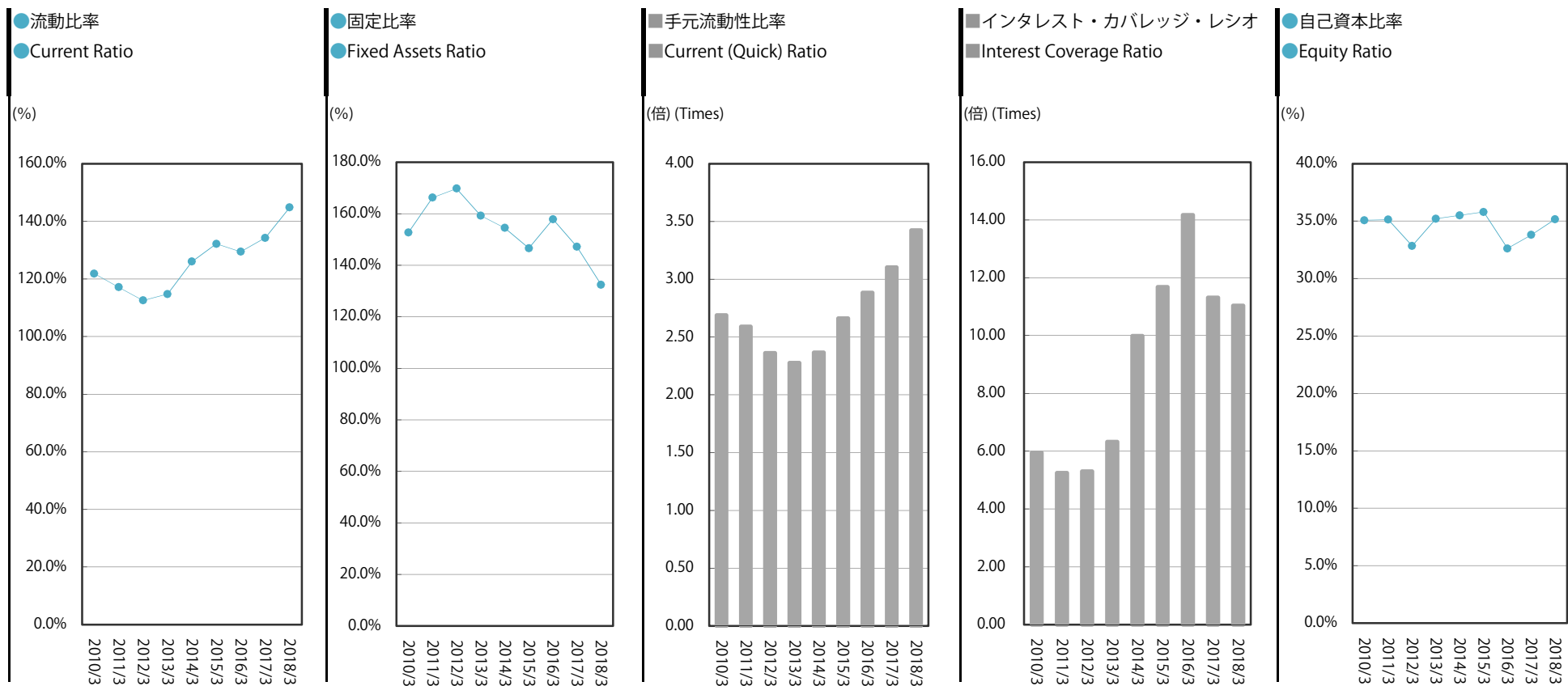


(千円) (Thousand Yen)

決算期	FISCAL YEAR	2010/3	2011/3	2012/3	2013/3	2014/3	2015/3	2016/3	2017/3	2018/3	増減
売上高	Net Sales	32,359,393	30,109,241	35,315,311	35,574,517	41,572,897	42,990,296	48,018,905	48,568,926	48,428,265	△ 140,660
営業利益	Operating Income	828,530	983,215	1,607,465	1,878,190	1,917,173	2,183,361	2,520,093	2,357,247	2,237,528	△ 119,718
売上高営業利益率 (%)	Operating Income to Net Sales (%)	2.6%	3.3%	4.6%	5.3%	4.6%	5.1%	5.2%	4.9%	4.6%	△0.2%
経常利益	Ordinary Income	647,277	770,734	1,350,482	1,686,459	1,707,315	1,947,834	2,269,884	2,097,437	2,124,616	27,178
売上高経常利益率 (%)	Ordinary Income to Net Sales (%)	2.0%	2.6%	3.8%	4.7%	4.1%	4.5%	4.7%	4.3%	4.4%	0.1%
当期純利益	Net Income	303,925	422,032	824,206	918,365	1,034,070	1,156,438	1,467,551	1,392,751	1,479,251	86,499
売上高当期純利益率 (%)	Net Income to Net Sales (%)	0.9%	1.4%	2.3%	2.6%	2.5%	2.7%	3.1%	2.9%	3.1%	0.2%
総資産	Total Assets	29,253,934	29,932,576	33,817,629	33,543,808	39,631,430	41,524,305	47,541,539	48,642,350	49,631,786	989,435
純資産	Net Assets	10,259,410	10,514,738	11,104,109	11,807,754	14,066,762	14,882,646	15,549,429	16,502,639	17,530,746	1,028,107
自己資本利益率 (%)	Return on Equity <ROE> (%)	3.0%	4.1%	7.6%	8.0%	8.0%	8.0%	9.7%	8.7%	8.7%	0.0%
総資産利益率 (%)	Return on Assets <ROA> (%)	1.0%	1.4%	2.6%	2.7%	2.8%	2.8%	3.3%	2.9%	3.0%	0.1%

経営指標 (連結) SELECTED FINANCIAL DATA (CONSOLIDATED)

安定性 STABILITY

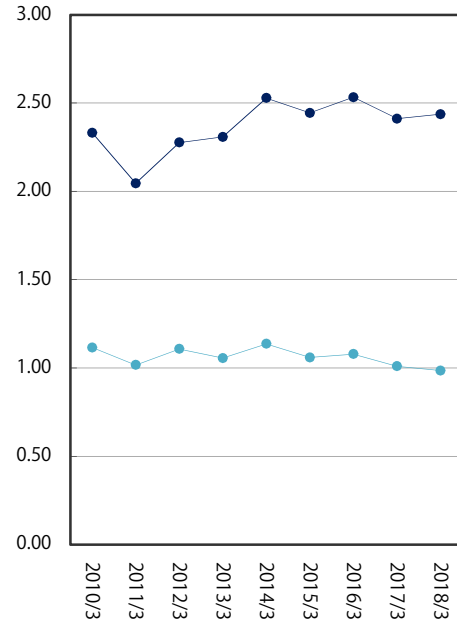


決算期	FISCAL YEAR	2010/3	2011/3	2012/3	2013/3	2014/3	2015/3	2016/3	2017/3	2018/3	増減
流動比率 (%)	Current Ratio (%)	121.9%	117.1%	112.5%	114.8%	126.0%	132.2%	129.4%	134.3%	144.8%	10.6%
固定比率 (%)	Fixed Assets Ratio (%)	152.7%	166.2%	169.7%	159.2%	154.5%	146.6%	157.8%	147.1%	132.4%	△14.8%
手元流動性比率 (倍)	Current (Quick) Ratio (Times)	2.69	2.59	2.36	2.28	2.36	2.66	2.88	3.10	3.42	0.32
インタレスト・カバレッジ・レシオ (倍)	Interest Coverage Ratio (Times)	5.95	5.25	5.30	6.32	9.98	11.68	14.17	11.31	11.04	△0.27
自己資本比率 (%)	Equity Ratio (%)	35.1%	35.1%	32.8%	35.2%	35.5%	35.8%	32.6%	33.8%	35.2%	1.4%

生産性・効率性 PRODUCTIVITY AND EFFICIENCY

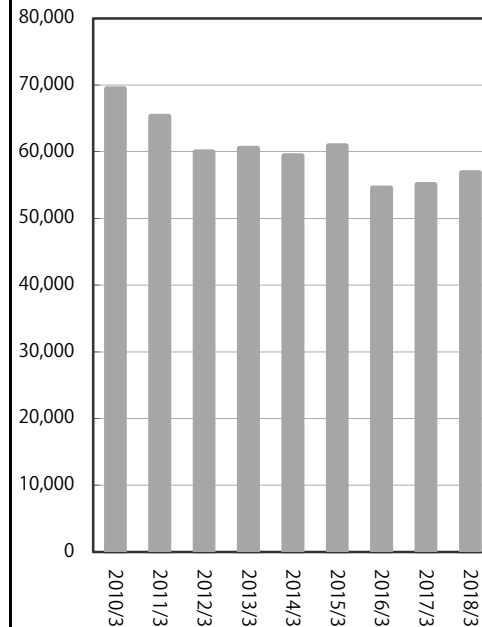
● 総資産回転率 ● 有形固定資産回転率
● Total Assets Turnover
● Tangible Fixed Assets Turnover

(回) (Times)



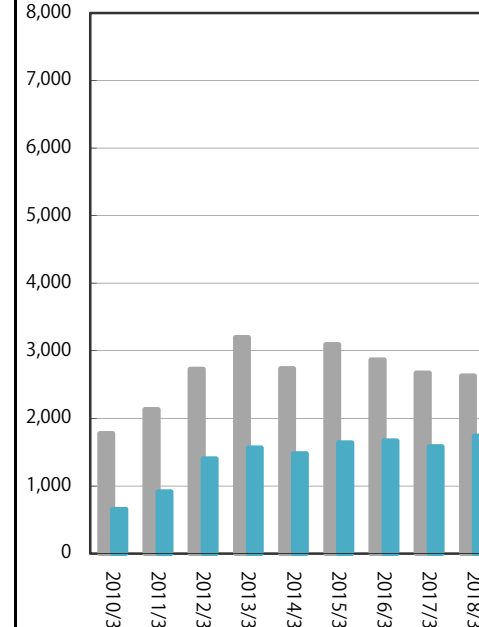
■ 従業員一人当たり売上高
■ Net Sales per Employee

(千円) (Thousand Yen)



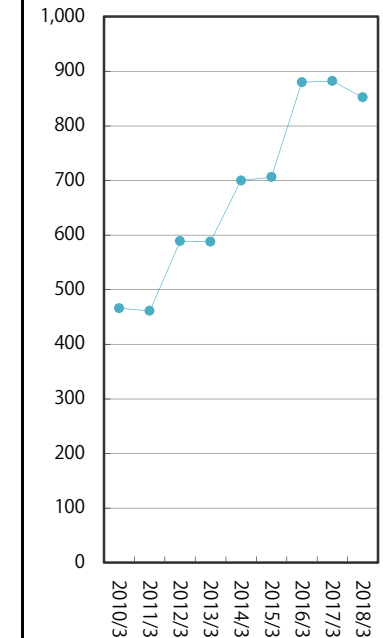
■ 従業員一人当たり営業利益 ■ 当期純利益
■ Operating Income per Employee
■ Net Income per Employee

(千円) (Thousand Yen)



● 従業員数
● Number of Employees

(人) (Persons)

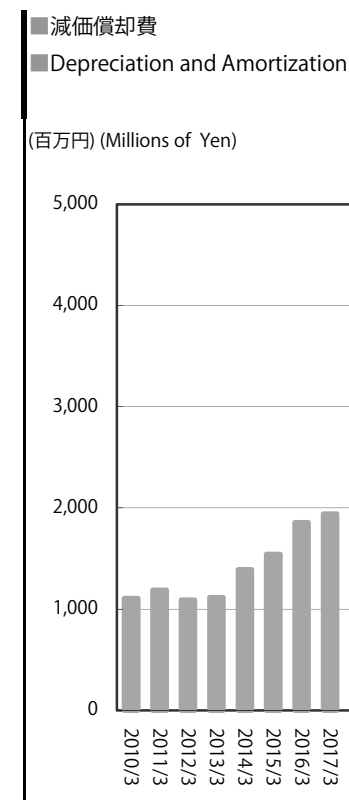
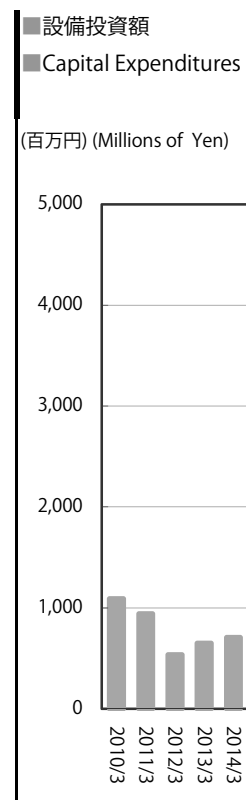
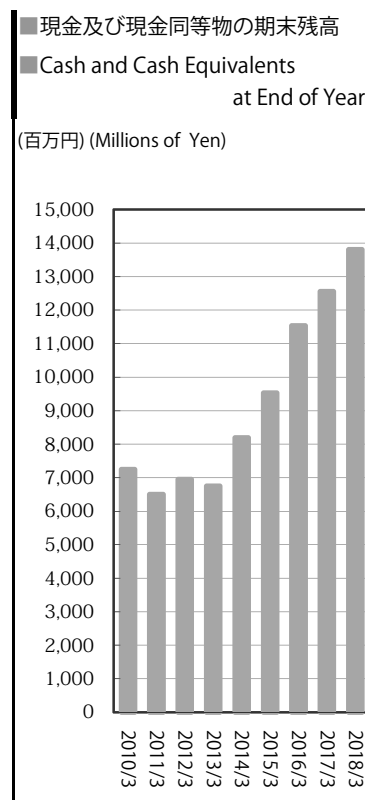
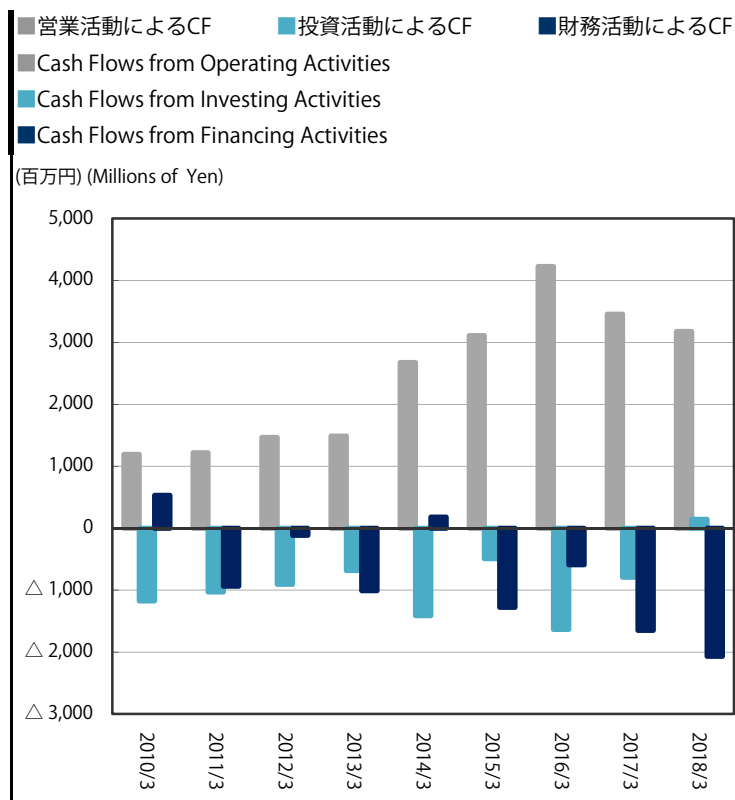


(千円) (Thousand Yen)

決算期	FISCAL YEAR	2010/3	2011/3	2012/3	2013/3	2014/3	2015/3	2016/3	2017/3	2018/3	増減
総資産回転率 (回)	Total Assets Turnover (Times)	1.12	1.02	1.11	1.06	1.14	1.06	1.08	1.01	0.99	△ 0.02
有形固定資産回転率 (回)	Tangible Fixed Assets Turnover (Times)	2.33	2.05	2.28	2.31	2.53	2.44	2.53	2.41	2.44	0.03
従業員一人当たり売上高	Net Sales per Employee	69,440	65,312	59,958	60,500	59,389	60,892	54,566	55,066	56,840	1,773
従業員一人当たり営業利益	Operating Income per Employee	1,777	2,132	2,729	3,194	2,738	3,092	2,863	2,672	2,626	△ 46
従業員一人当たり当期純利益	Net Income per Employee	652	915	1,399	1,561	1,477	1,638	1,667	1,579	1,736	157
従業員数 (人)	Number of Employees (Persons)	466	461	589	588	700	706	880	882	852	△ 30

経営指標 (連結) SELECTED FINANCIAL DATA (CONSOLIDATED)

キャッシュ・フロー CASH FLOWS

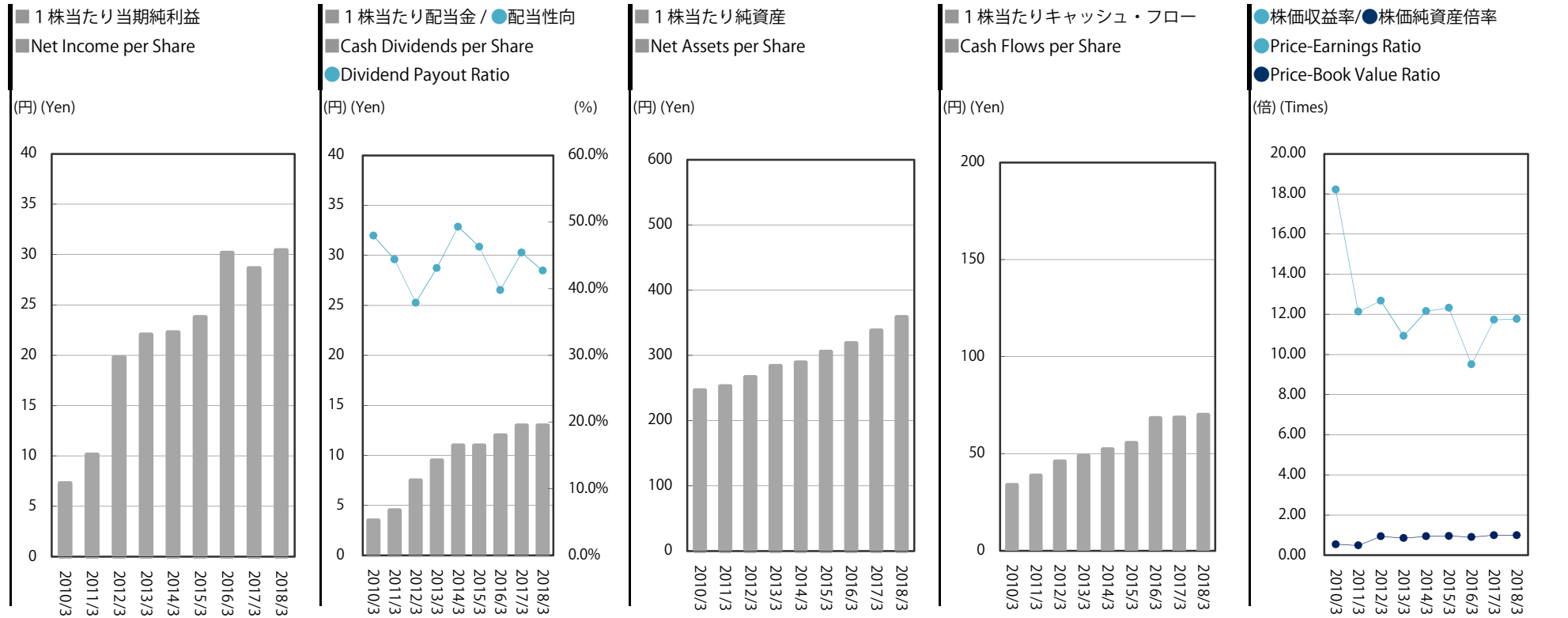


(千円) (Thousand Yen)

決算期	FISCAL YEAR	2010/3	2011/3	2012/3	2013/3	2014/3	2015/3	2016/3	2017/3	2018/3	増減
営業活動によるキャッシュ・フロー	Cash Flows from Operating Activities	1,192,880	1,217,471	1,467,654	1,486,662	2,677,609	3,110,320	4,227,722	3,455,281	3,178,337	△ 276,944
投資活動によるキャッシュ・フロー	Cash Flows from Investing Activities	△ 1,174,703	△ 1,026,897	△ 905,280	△ 680,449	△ 1,410,519	△ 492,723	△ 1,633,885	△ 790,800	144,815	935,616
財務活動によるキャッシュ・フロー	Cash Flows from Financing Activities	533,006	△ 938,498	△ 113,647	△ 1,008,001	178,338	△ 1,275,623	△ 588,232	△ 1,646,953	△ 2,067,830	△ 420,876
現金及び現金同等物の期末残高	Cash and Cash Equivalents at End of Year	7,247,842	6,499,918	6,948,645	6,746,856	8,192,285	9,534,258	11,539,862	12,557,389	13,812,712	1,255,322
設備投資額	Capital Expenditures	1,090,623	942,503	534,337	650,082	706,036	507,155	1,103,748	773,880	870,148	96,268
減価償却費	Depreciation and Amortization	1,105,432	1,188,713	1,090,627	1,116,814	1,390,860	1,543,788	1,856,826	1,939,861	1,928,171	△ 11,689

経営指標 (連結) SELECTED FINANCIAL DATA (CONSOLIDATED)

投資指標 PER SHARE DATA AND OTHERS



(円) (Yen)

決算期	FISCAL YEAR	2010/3	2011/3	2012/3	2013/3	2014/3	2015/3	2016/3	2017/3	2018/3	増減
1株当たり当期純利益	Net Income per Share <EPS>	7.30	10.14	19.80	22.06	22.29	23.78	30.18	28.64	30.42	1.78
1株当たり配当金	Cash Dividends per Share	3.50	4.50	7.50	9.50	11.00	11.00	12.00	13.00	13.00	0.00
配当性向 (%)	Dividend Payout Ratio (%)	47.9%	44.4%	37.9%	43.1%	49.3%	46.3%	39.8%	45.4%	42.7%	△2.7%
1株当たり純資産	Net Assets per Share	246.44	252.58	266.73	283.64	289.26	305.62	318.84	338.11	358.76	20.65
1株当たりキャッシュ・フロー	Cash Flows per Share	33.85	38.69	46.00	48.89	52.26	55.53	68.36	68.53	70.06	1.53
株価収益率 (倍)	Price-Earnings Ratio <PER> (Times)	18.22	12.13	12.68	10.92	12.16	12.32	9.51	11.73	11.77	0.04
株価純資産倍率 (倍)	Price-Book Value Ratio <PBR> (Times)	0.54	0.49	0.94	0.85	0.94	0.96	0.90	0.99	1.00	0.00

財務諸表（連結） FINANCIAL STATEMENTS (CONSOLIDATED)

貸借対照表 BALANCE SHEETS

(千円) (Thousand Yen)

決算期	FISCAL YEAR		2014/ 3	2015/ 3	2016/ 3	2017/ 3	2018/ 3	
資産の部		Assets						
I 流動資産		I Current Assets						
1	現金及び預金	1 Cash and Deposits	8,192,285	9,534,258	11,539,862	12,557,389	13,812,712	
2	受取手形及び売掛金	2 Notes and Accounts Receivable-Trade	8,446,406	8,359,091	9,145,439	9,249,939	9,884,706	
3	電子記録債権	3 Electronically recorded monetary claims - operating	—	493,958	964,574	1,087,918	1,291,227	
4	たな卸資産	4 Inventories	961,550	1,093,753	1,128,310	1,193,662	1,162,018	
5	繰延税金資産	5 Deferred Tax Assets	261,180	209,252	243,426	203,494	211,957	
6	その他	6 Other	154,107	143,821	196,912	207,839	206,098	
	貸倒引当金	Allowance for Doubtful Accounts	△ 126,461	△ 101,778	△ 147,085	△ 51,672	△ 40,827	
流動資産合計		Total Current Assets	17,889,070	19,732,356	23,071,439	24,448,571	26,527,893	
II 固定資産		II Noncurrent Assets						
1 有形固定資産		1 Property, Plant and Equipment						
(1)	建物及び構築物	(1) Buildings and Structures	5,984,706	5,784,940	6,703,061	6,413,115	6,801,488	
(2)	機械装置及び運搬具	(2) Machinery, Equipment and Vehicles	1,533,011	1,392,592	2,079,249	1,801,275	1,627,510	
(3)	土地	(3) Land	5,460,464	5,498,386	5,794,845	5,794,845	5,768,532	
(4)	リース資産	(4) Leased Assets	4,347,980	4,824,741	5,458,203	5,360,401	5,350,079	
(5)	建設仮勘定	(5) Construction in Progress	2,000	—	—	500,000	4,000	
(6)	その他	(6) Other	173,101	177,561	197,122	174,870	149,351	
有形固定資産合計		Total Property, Plant and Equipment	17,501,264	17,678,222	20,232,482	20,044,508	19,700,961	
2 無形固定資産		2 Intangible Assets						
(1)	のれん	(1) Goodwill	1,905,391	1,732,622	1,863,418	1,657,831	1,452,245	
(2)	その他	(2) Other	98,561	79,513	119,128	107,508	101,852	
無形固定資産合計		Total Intangible Assets	2,003,952	1,812,135	1,982,547	1,765,340	1,554,097	
3 投資その他の資産		3 Investments and Other Assets						
(1)	投資有価証券	(1) Investment Securities	1,213,943	1,362,339	1,177,462	1,395,280	1,475,690	
(2)	繰延税金資産	(2) Deferred Tax Assets	143,149	65,000	195,291	118,079	89,262	
(3)	退職給付に係る資産	(3) Net defined benefit asset	—	—	7,225	9,805	13,226	
(4)	その他	(4) Other	1,109,599	1,079,131	1,084,829	897,988	292,935	
	貸倒引当金	Allowance for Doubtful Accounts	△ 241,432	△ 211,277	△ 211,764	△ 37,380	△ 22,282	
投資その他の資産合計		Total Investments and Other Assets	2,225,260	2,295,194	2,253,043	2,383,772	1,848,833	
固定資産合計		Total Noncurrent Assets	21,730,477	21,785,552	24,468,073	24,193,621	23,103,892	
III 繰延資産		III Deferred Assets						
	株式交付費	Stock Issuance Cost	11,882	6,396	2,026	157	—	
繰延資産合計		Total Deferred Assets	11,882	6,396	2,026	157	—	
資産合計		Total Assets	39,631,430	41,524,305	47,541,539	48,642,350	49,631,786	

財務諸表（連結） FINANCIAL STATEMENTS (CONSOLIDATED)

貸借対照表 BALANCE SHEETS

(千円) (Thousand Yen)

決算期	FISCAL YEAR		2014/ 3	2015/ 3	2016/ 3	2017/ 3	2018/ 3					
負債の部		Liabilities										
I 流動負債		I Current Liabilities										
1	支払手形及び買掛金	1 Notes and Accounts Payable-Trade	8,650,528	8,932,135	5,428,957	5,528,304	5,677,227					
2	電子記録債務	2 Electronically recorded obligations - operating	—	—	4,943,872	5,009,199	5,083,002					
3	短期借入金	3 Short-term loans payable	—	—	600,000	600,000	450,000					
4	1年内償還予定の社債	4 Current portion of bonds	—	—	34,000	32,000	—					
5	1年内返済予定の長期借入金	5 Current Portion of Long-Term Loans Payable	3,392,624	3,400,724	3,947,286	4,090,125	4,000,075					
6	リース債務	6 Lease Obligations	622,866	761,536	925,493	1,014,171	1,133,906					
7	未払法人税等	7 Income Taxes Payable	455,174	324,399	495,492	274,059	549,316					
8	賞与引当金	8 Provision for Bonuses	305,791	314,162	373,018	384,268	378,383					
9	その他	9 Other	767,040	1,196,746	1,074,549	1,277,732	1,046,869					
流動負債合計		Total Current Liabilities	14,194,024	35.8%	14,929,705	36.0%	17,822,668	37.5%	18,209,860	37.4%	18,318,781	36.9%
II 固定負債		II Noncurrent Liabilities										
1	社債	1 Bonds payable	—	—	32,000	—	—					
2	長期借入金	2 Long-Term Loans Payable	6,585,930	6,519,266	7,924,948	7,804,657	7,706,142					
3	リース債務	3 Lease Obligations	4,075,770	4,524,735	5,131,435	5,001,907	4,908,705					
4	繰延税金負債	4 Deferred tax liabilities	—	—	57,052	49,437	50,068					
5	退職給付に係る負債	5 Net Defined Benefit Liability	680,681	639,691	903,017	980,817	1,033,558					
6	資産除去債務	6 Asset retirement obligations	—	—	31,559	32,138	32,727					
7	その他	7 Other	28,261	28,261	89,428	60,894	51,056					
固定負債合計		Total Noncurrent Liabilities	11,370,642	28.7%	11,711,953	28.2%	14,169,440	29.8%	13,929,851	28.6%	13,782,258	27.8%
負債合計		Total Liabilities	25,564,667	64.5%	26,641,659	64.2%	31,992,109	67.3%	32,139,711	66.1%	32,101,039	64.7%
純資産の部		Net Assets										
I 株主資本		I Shareholders' Equity										
1	資本金	1 Capital Stock	3,335,810	3,335,810	3,335,810	3,335,810	3,338,490					
2	資本剰余金	2 Capital Surplus	3,329,940	3,329,940	3,329,940	3,329,940	3,332,620					
3	利益剰余金	3 Retained Earnings	6,948,547	7,626,675	8,559,298	9,319,861	10,166,892					
4	自己株式	4 Treasury Stock	△ 27	△ 27	△ 27	△ 27	△ 27					
株主資本合計		Total Shareholders' Equity	13,614,269	34.4%	14,292,397	34.4%	15,225,020	32.0%	15,985,583	32.9%	16,837,975	33.9%
II その他の包括利益累計額		II Accumulated Other Comprehensive Income										
その他有価証券評価差額金		Valuation Difference on Available-for-Sale Securities	470,332	603,310	484,204	648,648	774,048					
退職給付に係る調整累計額		Remeasurements of Defined Benefit Plans	△ 17,839	△ 33,240	△ 203,969	△ 191,806	△ 160,061					
その他の包括利益累計額合計		Total Accumulated Other Comprehensive Income	452,493	1.1%	570,070	1.4%	280,234	0.6%	456,842	0.9%	613,987	1.2%
III 新株予約権		III Subscription Rights to Shares										
純資産合計		Total Net Assets	14,066,762	35.5%	14,882,646	35.8%	15,549,429	32.7%	16,502,639	33.9%	17,530,746	35.3%
負債純資産合計		Total Liabilities and Net Assets	39,631,430	100%	41,524,305	100%	47,541,539	100%	48,642,350	100%	49,631,786	100%

財務諸表（連結） FINANCIAL STATEMENTS (CONSOLIDATED)

損益計算書 STATEMENTS OF INCOME

(千円) (Thousand Yen)

決算期	FISCAL YEAR		2014/ 3	2015/ 3	2016/ 3	2017/ 3	2018/ 3					
I 売上高	I Net Sales		41,572,897	100%	42,990,296	100%	48,018,905	100%	48,568,926	100%	48,428,265	100%
II 売上原価	II Cost of Sales		35,843,967	86.2%	37,157,790	86.4%	41,126,698	85.6%	41,759,308	86.0%	41,691,218	86.1%
売上総利益	Gross Profit		5,728,930		5,832,505		6,892,206		6,809,618		6,737,047	
III 販売費及び一般管理費	III Selling, General and Administrative Expenses											
1 運賃	1 Freightage Expenses		760,505		790,461		1,077,638		1,073,351		1,066,041	
2 給料及び手当	2 Salaries and Allowances		974,469		1,020,690		1,174,533		1,244,311		1,238,150	
3 賞与引当金繰入額	3 Provision for Bonuses		109,986		116,525		128,168		142,095		150,322	
4 退職給付費用	4 Retirement Benefit Expenses		22,242		27,817		30,848		55,191		57,038	
5 貸倒引当金繰入額	5 Provision of Allowance for Doubtful Accounts		306,646		△ 13,473		1,910		△ 81,229		△ 11,770	
6 のれん償却額	6 Amortization of Goodwill		172,768		172,768		197,381		205,586		205,586	
7 その他	7 Other		1,465,139		1,534,352		1,761,631		1,813,063		1,794,150	
営業利益	Operating Income		1,917,173	4.6%	2,183,361	5.1%	2,520,093	5.2%	2,357,247	4.9%	2,237,528	4.6%
IV 営業外収益	IV Non-Operating Income											
1 受取配当金	1 Dividends Income		26,781		29,932		27,489		30,464		29,082	
2 補助金収入	2 Subsidy income		—		—		—		11,180		—	
3 産業立地交付金	3 Subsidy for Industrial Estate		15,074		—		7,690		—		144,682	
4 保険解約返戻金	4 Insurance premiums refunded cancellation		—		—		5,815		—		—	
5 保険差益	5 Gain on Insurance Adjustment		9,084		—		—		—		—	
6 その他	6 Other		8,760		12,975		14,320		8,726		13,670	
V 営業外費用	V Non-Operating Expenses											
1 支払利息	1 Interest Expenses		260,551		268,619		297,454		304,808		289,092	
2 その他	2 Other		9,007		9,815		8,068		5,371		11,254	
経常利益	Ordinary Income		1,707,315	4.1%	1,947,834	4.5%	2,269,884	4.7%	2,097,437	4.3%	2,124,616	4.4%
VI 特別利益	VI Extraordinary Income											
1 固定資産売却益	1 Gain on Sales of Noncurrent Assets		98		1,304		—		17		1,430	
2 投資有価証券売却益	2 Gain on Sales of Investment Securities		41,743		14,737		14,123		—		178,409	
3 新株予約権戻入益	3 Gain on reversal of subscription rights to shares		—		—		—		642		—	
VII 特別損失	VII Extraordinary Losses											
1 固定資産除却損	1 Loss on Retirement of Noncurrent Assets		67,076		10,363		26,935		48,511		11,830	
2 投資有価証券売却損	2 Loss on sales of investment securities		—		—		—		1,446		23,981	
3 その他	3 Other		893		75,957		10,787		4,054		756	
税金等調整前当期純利益	Income Before Income Taxes		1,681,186	4.0%	1,877,555	4.4%	2,246,286	4.7%	2,044,086	4.2%	2,267,888	4.7%
法人税、住民税及び事業税	Income Taxes-Current		740,817		654,968		772,326		597,119		833,850	
法人税等調整額	Income Taxes-Deferred		△ 93,701		66,148		6,407		54,215		△ 45,213	
当期純利益	Profit		1,034,070	0.0%	1,156,438	0.0%	1,467,551	0.0%	1,392,751	0.0%	1,479,251	0.0%
VI 親会社株主に帰属する当期純利益	VII Profit attributable to owners of parent		1,034,070	2.5%	1,156,438	2.7%	1,467,551	3.1%	1,392,751	2.9%	1,479,251	3.1%

財務諸表（連結） FINANCIAL STATEMENTS (CONSOLIDATED)

キャッシュ・フロー計算書 STATEMENTS OF CASH FLOWS

(千円) (Thousand Yen)

決算期	FISCAL YEAR	2014/ 3	2015/ 3	2016/ 3	2017/ 3	2018/ 3
I 営業活動によるキャッシュ・フロー		I Net Cash Provided by (Used in) Operating Activities				
税金等調整前当期純利益	Income Before Income Taxes	1,681,186	1,877,555	2,246,286	2,044,086	2,267,888
減価償却費	Depreciation and Amortization	1,390,860	1,543,788	1,856,826	1,939,861	1,928,171
のれん償却額	Amortization of Goodwill	172,768	172,768	197,381	205,586	205,586
産業立地交付金	Subsidy for Industrial Estate	—	—	—	—	△ 144,682
訴訟和解金	Litigation Settlement	—	44,100	—	—	—
貸倒引当金の増減額(△は減少)	Increase (Decrease) in Allowance for Doubtful Accounts	306,509	△ 54,838	△ 907	△ 269,797	△ 25,942
賞与引当金の増減額(△は減少)	Increase (Decrease) in Provision for Bonuses	34,682	8,371	△ 3,369	11,250	△ 5,884
退職給付に係る負債の増減額(△は減少)	Increase (Decrease) in Net Defined Benefit Liability	13,649	25,569	18,464	95,331	98,496
受取利息及び受取配当金	Interest and Dividends Income	△ 27,088	△ 30,261	△ 27,917	△ 30,524	△ 29,133
支払利息	Interest Expenses	260,551	268,619	297,454	304,808	289,092
固定資産売却損益(△は益)	Loss (Gain) on Sales of Noncurrent Assets	△ 98	△ 1,304	—	△ 17	△ 1,430
固定資産除却損	Loss on Retirement of Noncurrent Assets	67,076	10,363	26,935	48,511	11,830
投資有価証券売却損益(△は益)	Loss (Gain) on Sales of Investment Securities	△ 41,743	△ 14,737	△ 14,123	1,446	△ 154,427
売上債権の増減額(△は増加)	Decrease (Increase) in Notes and Accounts Receivable-Trade	△ 672,055	△ 406,643	△ 483,396	△ 227,844	△ 838,076
たな卸資産の増減額(△は増加)	Decrease (Increase) in Inventories	△ 146,862	△ 132,202	138,001	△ 65,352	31,643
仕入債務の増減額(△は減少)	Increase (Decrease) in Notes and Accounts Payable-Trade	725,428	281,607	943,653	164,674	222,726
未収入金の増減額(△は増加)	Decrease (Increase) in Accounts Receivable-Other	△ 13,481	20,704	△ 711	△ 16,736	7,568
未払金の増減額(△は減少)	Increase (Decrease) in Accounts Payable-Other	7,798	15,641	29,804	15,738	107,572
未払費用の増減額(△は減少)	Increase (Decrease) in Accrued Expenses	13,564	16,327	△ 34,065	4,956	206
未払消費税等の増減額(△は減少)	Increase (Decrease) in Accrued Consumption Taxes	26,007	457,288	△ 116,840	139,468	△ 35,079
前払費用の増減額(△は増加)	Decrease (Increase) in Prepaid Expenses	△ 6,284	△ 20,986	△ 9,588	△ 3,885	△ 9,456
破産更正債権等の増減額(△は増加)	Decrease (increase) in Claims Provable in Bankruptcy, Claims Provable in Rehabilitation	△ 212,606	30,916	131	183,734	14,833
その他	Other	△ 12,895	59,788	49,578	30,563	44,578
小計	Subtotal	3,566,969	4,172,437	5,113,597	4,575,859	3,986,081
利息及び配当金の受取額	Interest and Dividends Income Received	31,279	30,261	27,917	31,224	31,013
利息の支払額	Interest Expenses Paid	△ 268,204	△ 266,282	△ 298,317	△ 305,507	△ 288,009
法人税等の支払額	Income Taxes Paid	△ 652,435	△ 781,996	△ 615,475	△ 846,294	△ 550,748
訴訟和解金の支払額	Litigation Settlement Paid	—	△ 44,100	—	—	—
営業活動によるキャッシュ・フロー	Net Cash Provided by (Used in) Operating Activities	2,677,609	3,110,320	4,227,722	3,455,281	3,178,337

財務諸表（連結） FINANCIAL STATEMENTS (CONSOLIDATED)

キャッシュ・フロー計算書 STATEMENTS OF CASH FLOWS

(千円) (Thousand Yen)

決算期	FISCAL YEAR	2014/ 3	2015/ 3	2016/ 3	2017/ 3	2018/ 3
II 投資活動によるキャッシュ・フロー		II Net Cash Provided by (Used in) Investing Activities				
定期預金の預入による支出	Payments into time deposits	—	—	△ 107,500	—	—
定期預金の払戻による収入	Proceeds from withdrawal of time deposits	—	—	304,005	—	—
有形固定資産の取得による支出	Purchase of Property, Plant and Equipment	△ 675,492	△ 479,212	△ 1,077,900	△ 768,972	△ 836,470
無形固定資産の取得による支出	Purchase of Intangible Assets	△ 30,543	△ 27,942	△ 25,848	△ 4,907	△ 33,678
投資有価証券の取得による支出	Purchase of Investment Securities	△ 109,182	△ 10,993	△ 12,207	△ 12,838	△ 13,127
投資有価証券の売却による収入	Proceeds from Sales of Investment Securities	54,045	15,519	30,683	4,449	262,094
保険積立金の解約による収入	Proceeds from cancellation of insurance funds	—	—	30,599	433	594,702
産業立地交付金の受取による収入	Proceeds from subsidies for industrial estate	—	—	—	—	144,682
連結の範囲の変更を伴う 子会社株式の取得による支出	Purchase of shares of subsidiaries resulting in change in scope of consolidation	△ 687,194	—	△ 778,198	—	—
その他	Other	37,848	9,905	2,480	△ 8,965	26,611
投資活動によるキャッシュ・フロー	Net Cash Provided by (Used in) Investing Activities	△ 1,410,519	△ 492,723	△ 1,633,885	△ 790,800	144,815
III 財務活動によるキャッシュ・フロー		III Net Cash Provided by (Used in) Financing Activities				
短期借入金の純増減額 (△は減少)	Net increase (decrease) in short-term loans payable	—	—	270,000	—	△ 150,000
長期借入れによる収入	Proceeds From Long-Term Loans Payable	4,670,000	3,750,000	5,220,000	4,800,000	4,350,000
長期借入金の返済による支出	Repayment of Long-Term Loans Payable	△ 5,101,056	△ 3,808,564	△ 4,091,586	△ 4,777,452	△ 4,538,565
配当金の支払額	Cash Dividends Paid	△ 495,598	△ 534,591	△ 534,625	△ 632,516	△ 632,259
リース債務の返済による支出	Repayments of Lease Obligations	△ 529,534	△ 682,467	△ 837,302	△ 980,036	△ 1,051,065
長期設備未払金の支払いによる支出	Payments for Accrued amount payable for Capital Investment	—	—	△ 547,718	△ 22,948	△ 18,349
株式の発行による収入	Proceeds from issuance of common shares	1,634,528	—	—	—	—
社債の償還による支出	Redemption of bonds	—	—	△ 67,000	△ 34,000	△ 32,000
その他	Other	—	—	—	—	4,409
財務活動によるキャッシュ・フロー	Net Cash Provided by (Used in) Financing Activities	178,338	△ 1,275,623	△ 588,232	△ 1,646,953	△ 2,067,830
IV 現金及び現金同等物の増減額(△は減少)	IV Net Increase (Decrease) in Cash and Cash Equivalents	1,445,429	1,341,972	2,005,604	1,017,527	1,255,322
V 現金及び現金同等物の期首残高	V Cash and Cash Equivalents at Beginning of Period	6,746,856	8,192,285	9,534,258	11,539,862	12,557,389
VI 現金及び現金同等物の期末残高	VI Cash and Cash Equivalents at End of Period	8,192,285	9,534,258	11,539,862	12,557,389	13,812,712

▼CORPORATE INFORMATION

TRADE NAME	Kyoritsu Printing Co.,Ltd.
ESTABLISHED	August 1st, 1980
CAPITAL	3,338,490,250 Yen
NUMBER OF FULL-TIME EMPLOYEES	852
STOCK EXCHANGE LISTED	The First Section of the Tokyo Stock Exchange [7838]
NUMBER OF SHAREHOLDERS	11,392
HEAD OFFICE	36-1, Shimizu-cho, Itabashi-ku, Tokyo 03-5248-7800
OFFICE	Sapporo / Nagoya / Osaka / Takamatsu / Fukuoka
PRINTING FACTORY	Honjo First Factory / Honjo Second Factory Honjo Third Factory / Direct-Mail Service Center
BINDING FACTORY	Binding First Factory / Binding Second Factory Binding Third Factory / Binding Fourth Factory

▼OFFICERS

CEO	Katsunori Noda
COO	Takashi Kuramochi
DIRECTOR	Tetsuo Nakai
DIRECTOR	Shoya Sato
OUTSIDE DIRECTOR	Michio Fujimoto
OUTSIDE DIRECTOR	Masahiko Kamei
STANDING OUTSIDE AUDITOR	Kenzo Kawajiri
OUTSIDE AUDITOR	Hidekazu Kubokawa
OUTSIDE AUDITOR	Keiichiro Nakamura
EXECUTIVE OFFICER	Toshikatsu Funaki
EXECUTIVE OFFICER	Noriaki Tajima
EXECUTIVE OFFICER	Naoyuki Kumakiri
EXECUTIVE OFFICER	Kageyama Yutaka

▼会社概要

商号	共立印刷株式会社
設立	1980年8月1日
資本金	33億3,849万円
従業員数	852名
上場取引所	東京証券取引所 市場第一部 [7838]
株主数	11,392名
本社	東京都板橋区清水町36番 1号 03-5248-7800
営業所	札幌 / 名古屋 / 大阪 / 高松 / 福岡
印刷工場	本庄第 1 工場 / 本庄第 2 工場 本庄第 3 工場 / 情報物流出力センター
製本工場	製本第 1 工場 / 製本第 2 工場 製本第 3 工場 / 製本第 4 工場

▼役員

代表取締役会長	野田 勝憲
代表取締役社長	倉持 孝
取締役	中井 哲雄
取締役	佐藤 尚哉
社外取締役	藤本 三千夫
社外取締役	亀井 雅彦
常勤社外監査役	川尻 建三
社外監査役	窪川 秀一
社外監査役	中村 惠一郎
執行役員	船木 敏勝
執行役員	田島 紀明
執行役員	熊切 直之
執行役員	景山 豊