



FACT BOOK
2016/03

CONTENTS

目次	CONTENTS	・・・1
経営指標 (連結)	SELECTED FINANCIAL DATA (CONSOLIDATED)	
収益性	PROFITABILITY	・・・2
安定性	STABILITY	・・・3
生産性・効率性	PRODUCTIVITY AND EFFICIENCY	・・・4
キャッシュ・フロー	CASH FLOWS	・・・5
投資指標	PER SHARE DATA AND OTHERS	・・・6
財務諸表 (連結)	FINANCIAL STATEMENTS (CONSOLIDATED)	・・・7
会社概要	CORPORATE INFORMATION	・・・12



NOTE

■ PROFITABILITY

売上高営業利益率	=	営業利益÷売上高×100
売上高経常利益率	=	経常利益÷売上高×100
売上高当期純利益率	=	当期純利益÷売上高×100
自己資本利益率	=	当期純利益÷自己資本×100
総資産利益率	=	当期純利益÷期首・期末平均総資産×100

■ STABILITY

流動比率	=	流動資産÷流動負債×100
固定比率	=	固定資産÷自己資本×100
手元流動性比率	=	(現金＋流動資産の有価証券)÷月平均売上高
インタレスト・カバレッジ・レシオ	=	営業キャッシュ・フロー÷利払い
自己資本比率	=	自己資本÷総資産×100

■ PRODUCTIVITY AND EFFICIENCY

総資産回転率	=	売上高÷期首・期末平均総資産
有形固定資産回転率	=	売上高÷期首・期末平均有形固定資産

■ CASH FLOWS

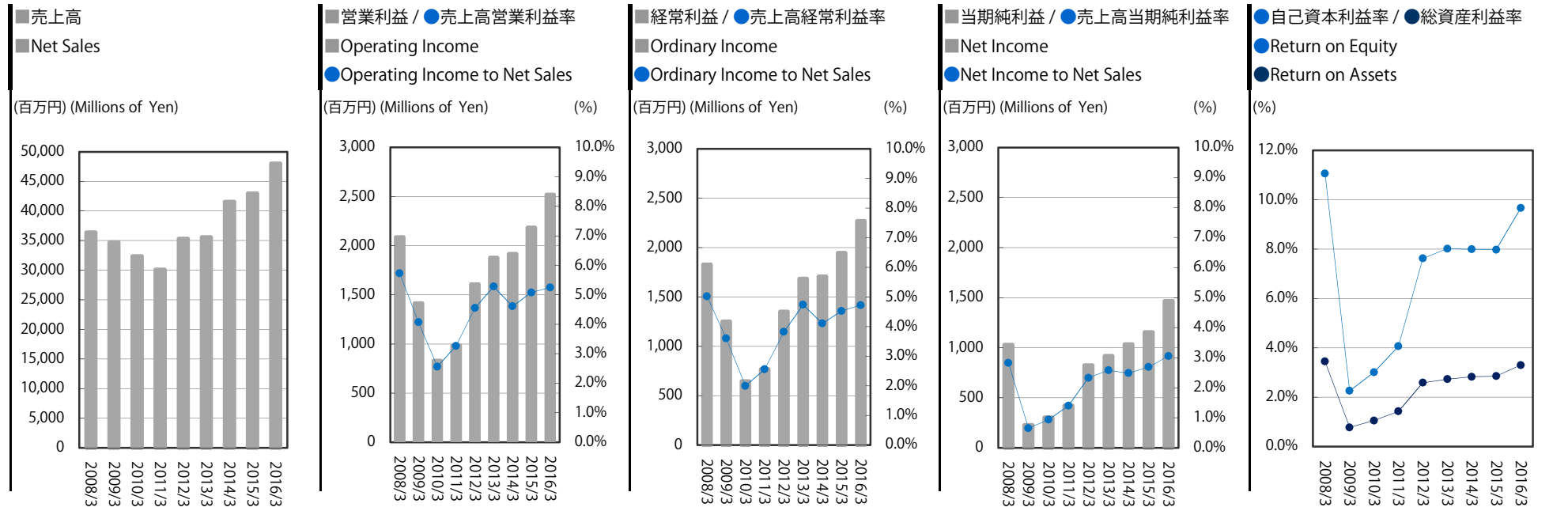
設備投資額	=	有形固定資産＋無形固定資産(取得価格) ※建設仮勘定を除く
-------	---	----------------------------------

■ PER SHARE DATA AND OTHERS

1株当たり当期純利益	=	当期純利益÷期首・期末平均発行済株式数
配当性向	=	配当金額÷当期純利益×100
1株当たり純資産	=	期末純資産÷期末発行済株式数
1株当たりキャッシュ・フロー	=	(当期純利益＋減価償却費)÷期首・期末平均発行済株式数
株価収益率	=	期末株価÷1株当たり当期純利益
株価純資産倍率	=	期末株価÷1株当たり純資産

経営指標 (連結) SELECTED FINANCIAL DATA (CONSOLIDATED)

収益性 PROFITABILITY

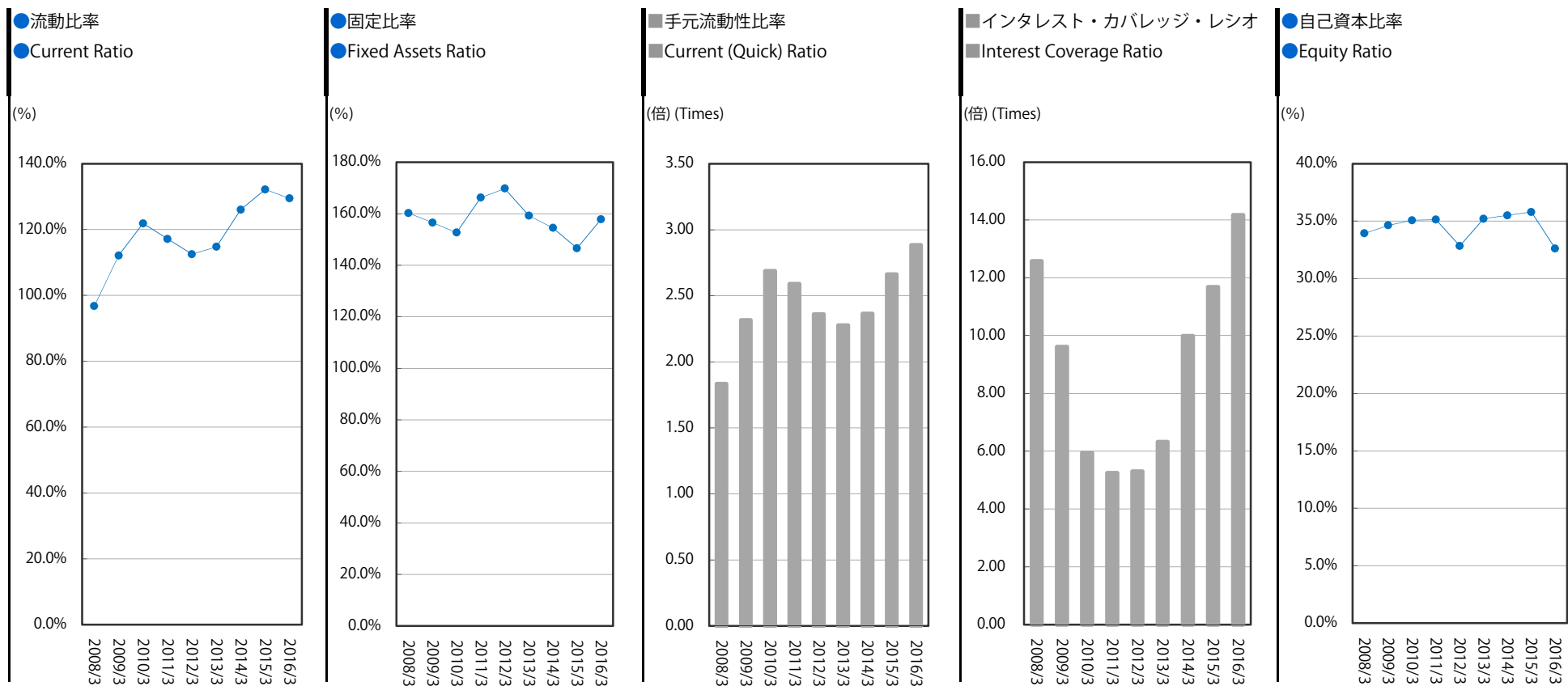


(千円) (Thousand Yen)

決算期	FISCAL YEAR	2008/3	2009/3	2010/3	2011/3	2012/3	2013/3	2014/3	2015/3	2016/3	増減
売上高	Net Sales	36,378,642	34,707,573	32,359,393	30,109,241	35,315,311	35,574,517	41,572,897	42,990,296	48,018,905	5,028,608
営業利益	Operating Income	2,085,843	1,412,424	828,530	983,215	1,607,465	1,878,190	1,917,173	2,183,361	2,520,093	336,731
売上高営業利益率 (%)	Operating Income to Net Sales (%)	5.7%	4.1%	2.6%	3.3%	4.6%	5.3%	4.6%	5.1%	5.2%	0.2%
経常利益	Ordinary Income	1,828,820	1,250,517	647,277	770,734	1,350,482	1,686,459	1,707,315	1,947,834	2,269,884	322,050
売上高経常利益率 (%)	Ordinary Income to Net Sales (%)	5.0%	3.6%	2.0%	2.6%	3.8%	4.7%	4.1%	4.5%	4.7%	0.2%
当期純利益	Net Income	1,029,001	227,464	303,925	422,032	824,206	918,365	1,034,070	1,156,438	1,467,551	311,113
売上高当期純利益率 (%)	Net Income to Net Sales (%)	2.8%	0.7%	0.9%	1.4%	2.3%	2.6%	2.5%	2.7%	3.1%	0.4%
総資産	Total Assets	30,150,071	28,751,729	29,253,934	29,932,576	33,817,629	33,543,808	39,631,430	41,524,305	47,541,539	6,017,233
純資産	Net Assets	10,229,939	9,956,138	10,259,410	10,514,738	11,104,109	11,807,754	14,066,762	14,882,646	15,549,429	666,783
自己資本利益率 (%)	Return on Equity <ROE> (%)	11.1%	2.3%	3.0%	4.1%	7.6%	8.0%	8.0%	8.0%	9.7%	1.7%
総資産利益率 (%)	Return on Assets <ROA> (%)	3.4%	0.8%	1.0%	1.4%	2.6%	2.7%	2.8%	2.8%	3.3%	0.4%

経営指標 (連結) SELECTED FINANCIAL DATA (CONSOLIDATED)

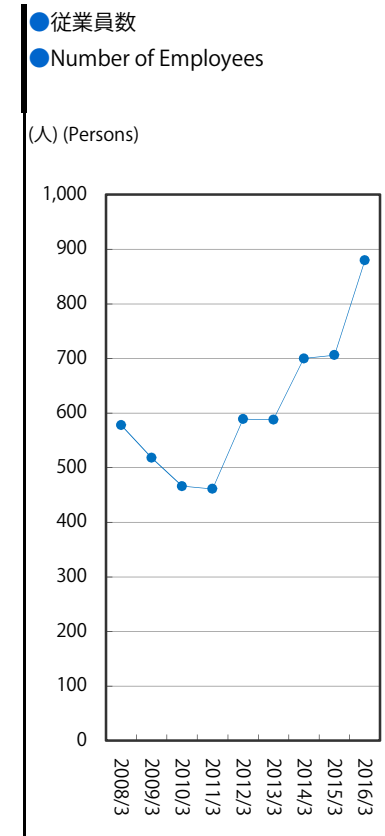
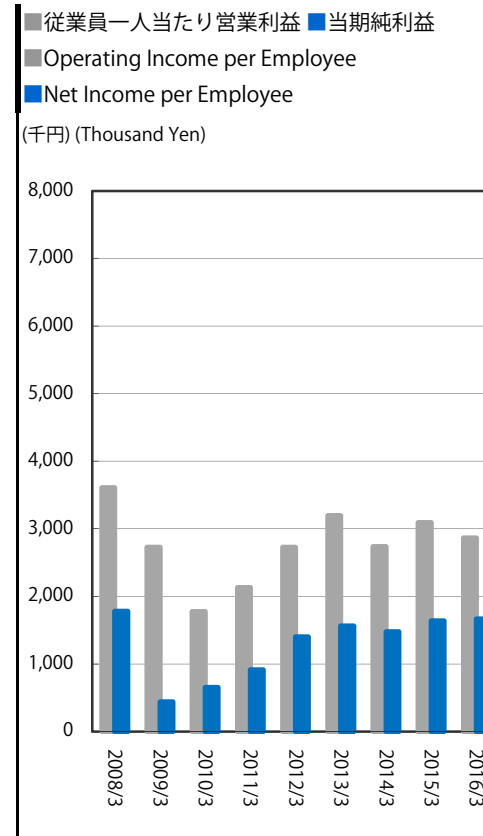
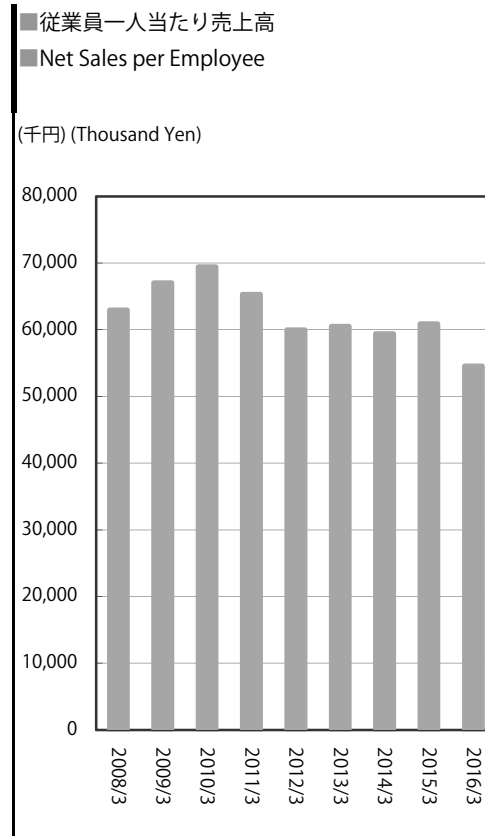
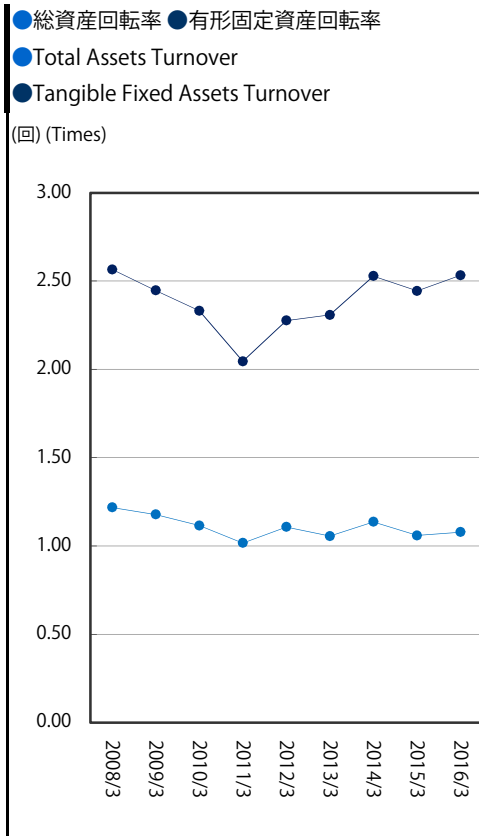
安定性 STABILITY



決算期	FISCAL YEAR	2008/3	2009/3	2010/3	2011/3	2012/3	2013/3	2014/3	2015/3	2016/3	増減
流動比率 (%)	Current Ratio (%)	96.7%	112.1%	121.9%	117.1%	112.5%	114.8%	126.0%	132.2%	129.4%	△2.7%
固定比率 (%)	Fixed Assets Ratio (%)	160.2%	156.5%	152.7%	166.2%	169.7%	159.2%	154.5%	146.6%	157.8%	11.2%
手元流動性比率 (倍)	Current (Quick) Ratio (Times)	1.83	2.32	2.69	2.59	2.36	2.28	2.36	2.66	2.88	0.22
インタレスト・カバレッジ・レシオ (倍)	Interest Coverage Ratio (Times)	12.57	9.61	5.95	5.25	5.30	6.32	9.98	11.68	14.17	2.49
自己資本比率 (%)	Equity Ratio (%)	33.9%	34.6%	35.1%	35.1%	32.8%	35.2%	35.5%	35.8%	32.6%	△3.2%

経営指標 (連結) SELECTED FINANCIAL DATA (CONSOLIDATED)

生産性・効率性 PRODUCTIVITY AND EFFICIENCY

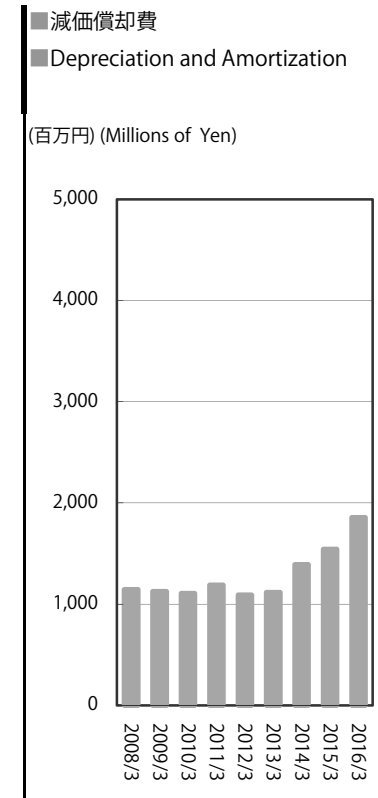
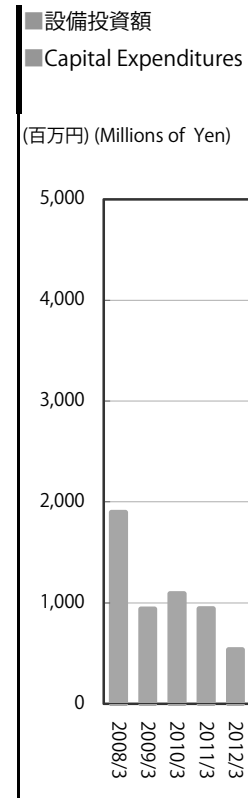
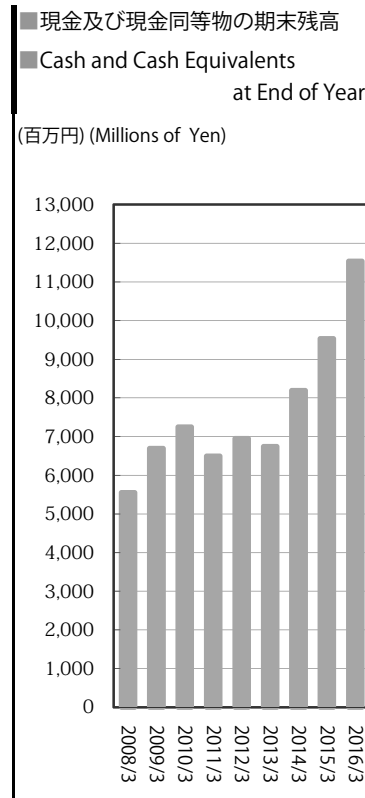
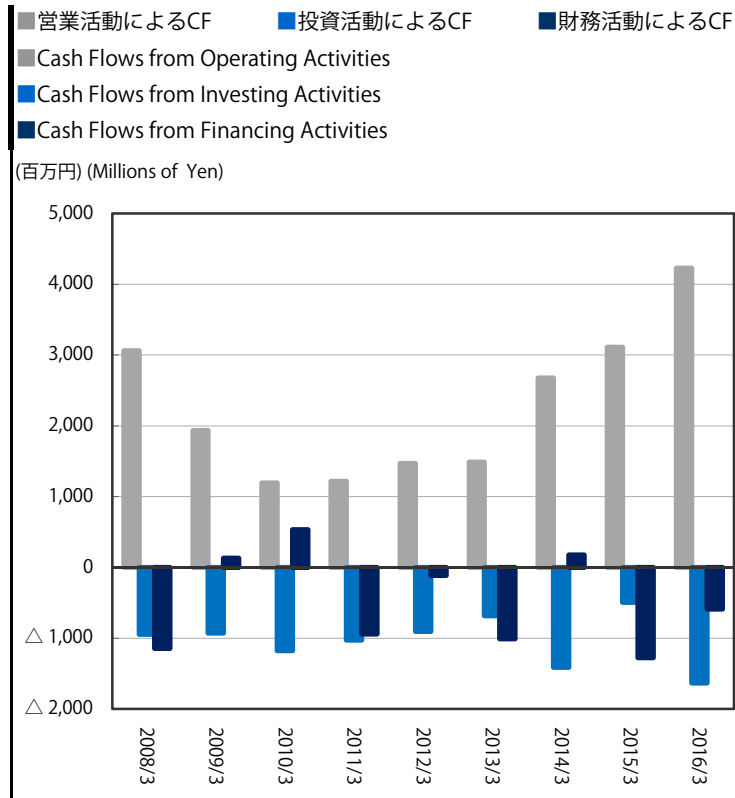


(千円) (Thousand Yen)

決算期	FISCAL YEAR	2008/3	2009/3	2010/3	2011/3	2012/3	2013/3	2014/3	2015/3	2016/3	増減
総資産回転率 (回)	Total Assets Turnover (Times)	1.22	1.18	1.12	1.02	1.11	1.06	1.14	1.06	1.08	0.02
有形固定資産回転率 (回)	Tangible Fixed Assets Turnover (Times)	2.57	2.45	2.33	2.05	2.28	2.31	2.53	2.44	2.53	0.09
従業員一人当たり売上高	Net Sales per Employee	62,938	67,003	69,440	65,312	59,958	60,500	59,389	60,892	54,566	△ 6,325
従業員一人当たり営業利益	Operating Income per Employee	3,608	2,726	1,777	2,132	2,729	3,194	2,738	3,092	2,863	△ 228
従業員一人当たり当期純利益	Net Income per Employee	1,780	439	652	915	1,399	1,561	1,477	1,638	1,667	29
従業員数 (人)	Number of Employees (Persons)	578	518	466	461	589	588	700	706	880	174

経営指標 (連結) SELECTED FINANCIAL DATA (CONSOLIDATED)

キャッシュ・フロー CASH FLOWS

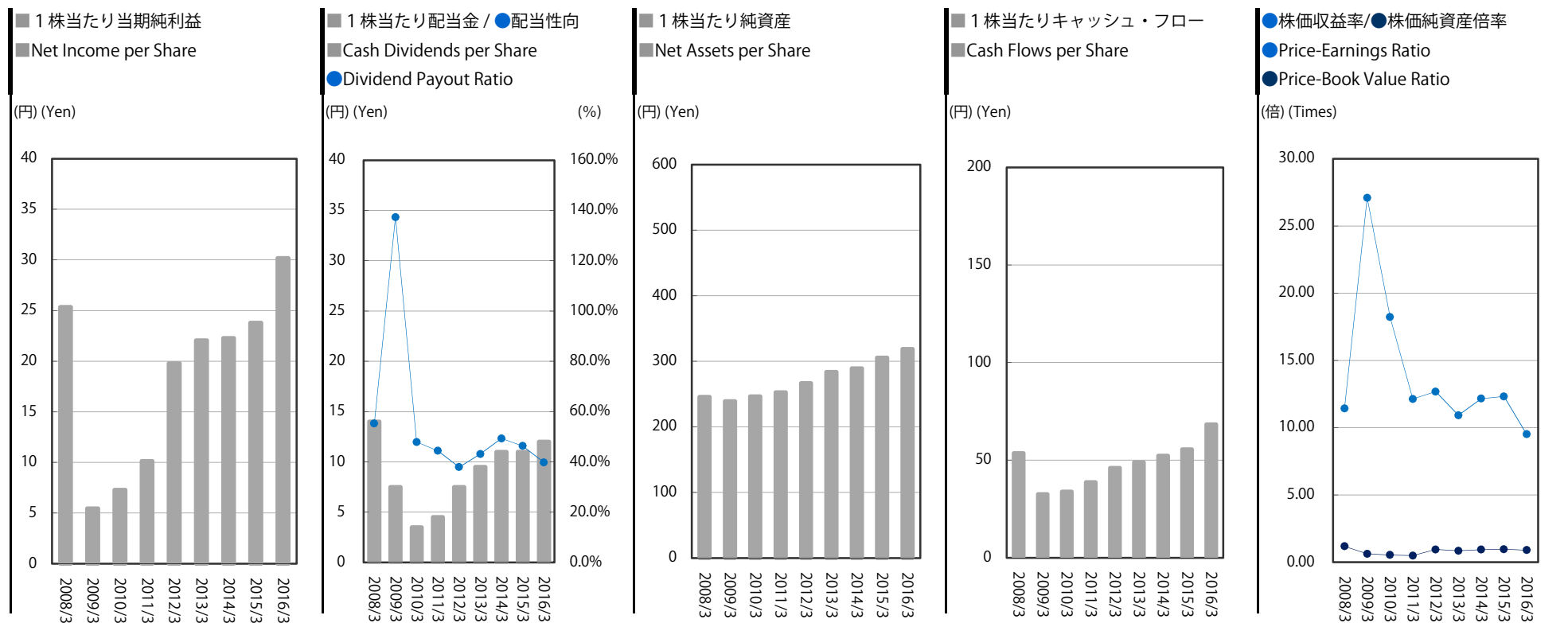


(千円) (Thousand Yen)

決算期	FISCAL YEAR	2008/3	2009/3	2010/3	2011/3	2012/3	2013/3	2014/3	2015/3	2016/3	増減
営業活動によるキャッシュ・フロー	Cash Flows from Operating Activities	3,063,151	1,937,109	1,192,880	1,217,471	1,467,654	1,486,662	2,677,609	3,110,320	4,227,722	1,117,402
投資活動によるキャッシュ・フロー	Cash Flows from Investing Activities	△ 945,676	△ 925,756	△ 1,174,703	△ 1,026,897	△ 905,280	△ 680,449	△ 1,410,519	△ 492,723	△ 1,633,885	△ 1,141,162
財務活動によるキャッシュ・フロー	Cash Flows from Financing Activities	△ 1,142,603	129,491	533,006	△ 938,498	△ 113,647	△ 1,008,001	178,338	△ 1,275,623	△ 588,232	687,391
現金及び現金同等物の期末残高	Cash and Cash Equivalents at End of Year	5,555,813	6,696,659	7,247,842	6,499,918	6,948,645	6,746,856	8,192,285	9,534,258	11,539,862	2,005,604
設備投資額	Capital Expenditures	1,896,790	940,082	1,090,623	942,503	534,337	650,082	706,036	507,155	1,103,748	596,593
減価償却費	Depreciation and Amortization	1,144,678	1,126,457	1,105,432	1,188,713	1,090,627	1,116,814	1,390,860	1,543,788	1,856,826	313,037

経営指標 (連結) SELECTED FINANCIAL DATA (CONSOLIDATED)

投資指標 PER SHARE DATA AND OTHERS



(円) (Yen)

決算期	FISCAL YEAR	2008/3	2009/3	2010/3	2011/3	2012/3	2013/3	2014/3	2015/3	2016/3	増減
1株当たり当期純利益	Net Income per Share <EPS>	25.36	5.46	7.30	10.14	19.80	22.06	22.29	23.78	30.18	6.40
1株当たり配当金	Cash Dividends per Share	14.00	7.50	3.50	4.50	7.50	9.50	11.00	11.00	12.00	1.00
配当性向 (%)	Dividend Payout Ratio (%)	55.2%	137.4%	47.9%	44.4%	37.9%	43.1%	49.3%	46.3%	39.8%	△6.5%
1株当たり純資産	Net Assets per Share	245.73	239.16	246.44	252.58	266.73	283.64	289.26	305.62	318.84	13.22
1株当たりキャッシュ・フロー	Cash Flows per Share	53.58	32.52	33.85	38.69	46.00	48.89	52.26	55.53	68.36	12.83
株価収益率 (倍)	Price-Earnings Ratio <PER> (Times)	11.43	27.09	18.22	12.13	12.68	10.92	12.16	12.32	9.51	△ 2.81
株価純資産倍率 (倍)	Price-Book Value Ratio <PBR> (Times)	1.18	0.62	0.54	0.49	0.94	0.85	0.94	0.96	0.90	△ 0.06

財務諸表（連結） FINANCIAL STATEMENTS (CONSOLIDATED)

貸借対照表 BALANCE SHEETS

(千円) (Thousand Yen)

決算期	FISCAL YEAR		2012/ 3	2013/ 3	2014/ 3	2015/ 3	2016/ 3	
資産の部		Assets						
I 流動資産		I Current Assets						
1	現金及び預金	1 Cash and Deposits	6,948,645	6,746,856	8,192,285	9,534,258	11,539,862	
2	受取手形及び売掛金	2 Notes and Accounts Receivable-Trade	6,899,823	7,038,710	8,446,406	8,359,091	9,145,439	
3	電子記録債権	3 Electronically recorded monetary claims - operating	—	—	—	493,958	964,574	
4	たな卸資産	4 Inventories	758,058	701,590	961,550	1,093,753	1,128,310	
5	繰延税金資産	5 Deferred Tax Assets	176,490	152,763	261,180	209,252	243,426	
6	その他	6 Other	190,976	104,381	154,107	143,821	196,912	
	貸倒引当金	Allowance for Doubtful Accounts	△ 1,457	△ 1,187	△ 126,461	△ 101,778	△ 147,085	
流動資産合計		Total Current Assets	14,972,537	14,743,114	17,889,070	19,732,356	23,071,439	
			44.3%	44.0%	45.1%	47.5%	48.5%	
II 固定資産		II Noncurrent Assets						
1 有形固定資産		1 Property, Plant and Equipment						
(1)	建物及び構築物	(1) Buildings and Structures	5,844,263	5,951,864	5,984,706	5,784,940	6,703,061	
(2)	機械装置及び運搬具	(2) Machinery, Equipment and Vehicles	1,890,981	1,668,245	1,533,011	1,392,592	2,079,249	
(3)	土地	(3) Land	5,130,651	5,130,651	5,460,464	5,498,386	5,794,845	
(4)	リース資産	(4) Leased Assets	2,449,349	2,511,578	4,347,980	4,824,741	5,458,203	
(5)	建設仮勘定	(5) Construction in Progress	—	—	2,000	—	—	
(6)	その他	(6) Other	117,802	124,737	173,101	177,561	197,122	
有形固定資産合計		Total Property, Plant and Equipment	15,433,047	15,387,077	17,501,264	17,678,222	20,232,482	
			45.6%	45.8%	44.2%	42.6%	42.6%	
2 無形固定資産		2 Intangible Assets						
(1)	のれん	(1) Goodwill	1,514,193	1,428,855	1,905,391	1,732,622	1,863,418	
(2)	その他	(2) Other	96,848	84,182	98,561	79,513	119,128	
無形固定資産合計		Total Intangible Assets	1,611,041	1,513,037	2,003,952	1,812,135	1,982,547	
			4.8%	4.5%	5.1%	4.4%	4.2%	
3 投資その他の資産		3 Investments and Other Assets						
(1)	投資有価証券	(1) Investment Securities	838,299	976,051	1,213,943	1,362,339	1,177,462	
(2)	繰延税金資産	(2) Deferred Tax Assets	133,268	91,517	143,149	65,000	195,291	
(3)	退職給付に係る資産	(3) Net defined benefit asset	—	—	—	—	7,225	
(4)	その他	(4) Other	833,599	840,962	1,109,599	1,079,131	1,084,829	
	貸倒引当金	Allowance for Doubtful Accounts	△ 4,164	△ 7,952	△ 241,432	△ 211,277	△ 211,764	
投資その他の資産合計		Total Investments and Other Assets	1,801,002	1,900,578	2,225,260	2,295,194	2,253,043	
			5.3%	5.7%	5.6%	5.5%	4.7%	
固定資産合計		Total Noncurrent Assets	18,845,091	18,800,693	21,730,477	21,785,552	24,468,073	
			55.7%	56.0%	54.9%	52.5%	51.5%	
III 繰延資産		III Deferred Assets						
	株式交付費	Stock Issuance Cost	—	—	11,882	6,396	2,026	
繰延資産合計		Total Deferred Assets	—	—	11,882	6,396	2,026	
			0.0%	0.0%	0.0%	0.0%	0.0%	
資産合計		Total Assets	33,817,629	33,543,808	39,631,430	41,524,305	47,541,539	
			100%	100%	100%	100%	100%	

財務諸表（連結） FINANCIAL STATEMENTS (CONSOLIDATED)

貸借対照表 BALANCE SHEETS

(千円) (Thousand Yen)

決算期	FISCAL YEAR		2012/ 3	2013/ 3	2014/ 3	2015/ 3	2016/ 3					
負債の部		Liabilities										
I 流動負債		I Current Liabilities										
1	支払手形及び買掛金	1 Notes and Accounts Payable-Trade	7,799,733	7,101,518	8,650,528	8,932,135	5,428,957					
2	電子記録債務	2 Electronically recorded obligations - operating	—	—	—	—	4,943,872					
3	短期借入金	3 Short-term loans payable	—	—	—	—	600,000					
4	1年内償還予定の社債	4 Current portion of bonds	—	—	—	—	34,000					
5	1年内返済予定の長期借入金	5 Current Portion of Long-Term Loans Payable	3,829,830	3,957,141	3,392,624	3,400,724	3,947,286					
6	リース債務	6 Lease Obligations	287,879	359,930	622,866	761,536	925,493					
7	未払法人税等	7 Income Taxes Payable	429,700	355,558	455,174	324,399	495,492					
8	賞与引当金	8 Provision for Bonuses	209,721	229,901	305,791	314,162	373,018					
9	その他	9 Other	749,365	843,883	767,040	1,196,746	1,074,549					
流動負債合計		Total Current Liabilities	13,306,231	39.3%	12,847,933	38.3%	14,194,024	35.8%	14,929,705	36.0%	17,822,668	37.5%
II 固定負債		II Noncurrent Liabilities										
1	社債	1 Bonds payable	—	—	—	—	32,000					
2	長期借入金	2 Long-Term Loans Payable	6,335,120	5,852,469	6,585,930	6,519,266	7,924,948					
3	リース債務	3 Lease Obligations	2,363,455	2,385,392	4,075,770	4,524,735	5,131,435					
4	繰延税金負債	4 Deferred tax liabilities	—	—	—	—	57,052					
5	退職給付引当金	5 Provision for Retirement Benefits	697,768	639,313	—	—	—					
6	退職給付に係る負債	6 Net Defined Benefit Liability	—	—	680,681	639,691	903,017					
7	資産除去債務	7 Asset retirement obligations	—	—	—	—	31,559					
8	その他	8 Other	10,945	10,945	28,261	28,261	89,428					
固定負債合計		Total Noncurrent Liabilities	9,407,289	27.8%	8,888,119	26.5%	11,370,642	28.7%	11,711,953	28.2%	14,169,440	29.8%
負債合計		Total Liabilities	22,713,520	67.2%	21,736,053	64.8%	25,564,667	64.5%	26,641,659	64.2%	31,992,109	67.3%
純資産の部		Net Assets										
I 株主資本		I Shareholders' Equity										
1	資本金	1 Capital Stock	2,511,350	2,511,350	3,335,810	3,335,810	3,335,810					
2	資本剰余金	2 Capital Surplus	2,505,480	2,505,480	3,329,940	3,329,940	3,329,940					
3	利益剰余金	3 Retained Earnings	5,825,578	6,410,905	6,948,547	7,626,675	8,559,298					
4	自己株式	4 Treasury Stock	△ 13	△ 27	△ 27	△ 27	△ 27					
株主資本合計		Total Shareholders' Equity	10,842,395	11,427,707	13,614,269	14,292,397	15,225,020					
II その他の包括利益累計額		II Accumulated Other Comprehensive Income										
その他有価証券評価差額金		Valuation Difference on Available-for-Sale Securities	261,713	380,047	470,332	603,310	484,204					
退職給付に係る調整累計額		Remeasurements of Defined Benefit Plans	—	—	△ 17,839	△ 33,240	△ 203,969					
その他の包括利益累計額合計		Total Accumulated Other Comprehensive Income	261,713	380,047	452,493	570,070	280,234					
III 新株予約権		III Subscription Rights to Shares										
純資産合計		Total Net Assets	11,104,109	32.8%	11,807,754	35.2%	14,066,762	35.5%	14,882,646	35.8%	15,549,429	32.7%
負債純資産合計		Total Liabilities and Net Assets	33,817,629	100%	33,543,808	100%	39,631,430	100%	41,524,305	100%	47,541,539	100%

財務諸表（連結） FINANCIAL STATEMENTS (CONSOLIDATED)

損益計算書 STATEMENTS OF INCOME

(千円) (Thousand Yen)

決算期	FISCAL YEAR		2012/ 3	2013/ 3	2014/ 3	2015/ 3	2016/ 3					
I	売上高	I Net Sales	35,315,311	100%	35,574,517	100%	41,572,897	100%	42,990,296	100%	48,018,905	100%
II	売上原価	II Cost of Sales	30,994,620	87.8%	30,831,392	86.7%	35,843,967	86.2%	37,157,790	86.4%	41,126,698	85.6%
	売上総利益	Gross Profit	4,320,690		4,743,125		5,728,930		5,832,505		6,892,206	
III	販売費及び一般管理費	III Selling, General and Administrative Expenses										
1	運賃	1 Freightage Expenses	645,727		625,712		760,505		790,461		1,077,638	
2	給料及び手当	2 Salaries and Allowances	723,827		782,665		974,469		1,020,690		1,174,533	
3	賞与引当金繰入額	3 Provision for Bonuses	75,826		85,975		109,986		116,525		128,168	
4	退職給付費用	4 Retirement Benefit Expenses	10,097		10,978		22,242		27,817		30,848	
5	貸倒引当金繰入額	5 Provision of Allowance for Doubtful Accounts	—		—		306,646		△ 13,473		1,910	
6	のれん償却額	6 Amortization of Goodwill	79,694		107,838		172,768		172,768		197,381	
7	その他	7 Other	1,178,051		1,251,765		1,465,139		1,534,352		1,761,631	
	営業利益	Operating Income	1,607,465	4.6%	1,878,190	5.3%	1,917,173	4.6%	2,183,361	5.1%	2,520,093	5.2%
IV	営業外収益	IV Non-Operating Income										
1	受取配当金	1 Dividends Income	24,567		25,976		26,781		29,932		27,489	
2	産業立地交付金	2 Subsidy for Industrial Estate	9,117		15,056		15,074		—		7,690	
3	保険解約返戻金	3 Insurance premiums refunded cancellation	—		—		—		—		5,815	
4	保険差益	4 Gain on Insurance Adjustment	—		—		9,084		—		—	
5	その他	5 Other	6,226		5,834		8,760		12,975		14,320	
V	営業外費用	V Non-Operating Expenses										
1	支払利息	1 Interest Expenses	277,724		235,317		260,551		268,619		297,454	
2	その他	2 Other	19,170		3,279		9,007		9,815		8,068	
	経常利益	Ordinary Income	1,350,482	3.8%	1,686,459	4.7%	1,707,315	4.1%	1,947,834	4.5%	2,269,884	4.7%
VI	特別利益	VI Extraordinary Income										
1	固定資産売却益	1 Gain on Sales of Noncurrent Assets	—		357		98		1,304		—	
2	投資有価証券売却益	2 Gain on Sales of Investment Securities	—		—		41,743		14,737		14,123	
3	段階取得に係る差益	3 Gain on Step Acquisitions	232,875		—		—		—		—	
VII	特別損失	VII Extraordinary Losses										
1	固定資産除却損	1 Loss on Retirement of Noncurrent Assets	108,758		81,512		67,076		10,363		26,935	
2	投資有価証券評価損	2 Loss on Valuation of Investment Securities	1,157		28,324		893		31,856		10,787	
3	会員権評価損	3 Loss on Valuation of Membership	29,500		—		—		—		—	
4	訴訟和解金	4 Litigation Settlement	—		—		—		44,100		—	
5	その他	5 Other	331		—		—		—		—	
	税金等調整前当期純利益	Income Before Income Taxes	1,443,610	4.1%	1,576,979	4.4%	1,681,186	4.0%	1,877,555	4.4%	2,246,286	4.7%
	法人税、住民税及び事業税	Income Taxes-Current	655,264		629,726		740,817		654,968		772,326	
	法人税等調整額	Income Taxes-Deferred	△ 35,860		28,887		△ 93,701		66,148		6,407	
	当期純利益	Profit	824,206	2.3%	918,365	2.6%	1,034,070	2.5%	1,156,438	2.7%	1,467,551	3.1%
VIII	親会社株主に帰属する当期純利益	VIII Profit attributable to owners of parent	824,206	2.3%	918,365	2.6%	1,034,070	2.5%	1,156,438	2.7%	1,467,551	3.1%

財務諸表（連結） FINANCIAL STATEMENTS (CONSOLIDATED)

キャッシュ・フロー計算書 STATEMENTS OF CASH FLOWS

(千円) (Thousand Yen)

決算期	FISCAL YEAR	2012/ 3	2013/ 3	2014/ 3	2015/ 3	2016/ 3
I 営業活動によるキャッシュ・フロー		I Net Cash Provided by (Used in) Operating Activities				
税金等調整前当期純利益	Income Before Income Taxes	1,443,610	1,576,979	1,681,186	1,877,555	2,246,286
減価償却費	Depreciation and Amortization	1,090,627	1,116,814	1,390,860	1,543,788	1,856,826
のれん償却額	Amortization of Goodwill	79,694	107,838	172,768	172,768	197,381
訴訟和解金	Litigation Settlement	—	—	—	44,100	—
貸倒引当金の増減額(△は減少)	Increase (Decrease) in Allowance for Doubtful Accounts	314	3,518	306,509	△ 54,838	△ 907
賞与引当金の増減額(△は減少)	Increase (Decrease) in Provision for Bonuses	37,411	20,179	34,682	8,371	△ 3,369
退職給付引当金の増減額(△は減少)	Increase (Decrease) in Provision for Retirement Benefits	16,784	△ 58,455	—	—	—
退職給付に係る負債の増減額(△は減少)	Increase (Decrease) in Net Defined Benefit Liability	—	—	13,649	25,569	18,464
受取利息及び受取配当金	Interest and Dividends Income	△ 24,829	△ 26,219	△ 27,088	△ 30,261	△ 27,917
支払利息	Interest Expenses	277,724	235,317	260,551	268,619	297,454
段階取得に係る差損益 (△は益)	Loss (Gain) on Step Acquisitions	△ 232,875	—	—	—	—
固定資産売却損益(△は益)	Loss (Gain) on Sales of Noncurrent Assets	—	△ 357	△ 98	△ 1,304	—
固定資産除却損	Loss on Retirement of Noncurrent Assets	108,758	81,512	67,076	10,363	26,935
投資有価証券売却損益(△は益)	Loss (Gain) on Sales of Investment Securities	—	—	△ 41,743	△ 14,737	△ 14,123
投資有価証券評価損益(△は益)	Loss (Gain) on Valuation of Investment Securities	1,157	28,324	893	31,856	10,787
会員権評価損	Loss on Valuation of Membership	29,500	—	—	—	—
売上債権の増減額(△は増加)	Decrease (Increase) in Notes and Accounts Receivable-Trade	△ 1,184,462	△ 54,004	△ 672,055	△ 406,643	△ 483,396
たな卸資産の増減額(△は増加)	Decrease (Increase) in Inventories	△ 236,370	56,467	△ 146,862	△ 132,202	138,001
仕入債務の増減額(△は減少)	Increase (Decrease) in Notes and Accounts Payable-Trade	560,420	△ 698,215	725,428	281,607	943,653
未収入金の増減額(△は増加)	Decrease (Increase) in Accounts Receivable-Other	57,239	1,305	△ 13,481	20,704	△ 711
未払金の増減額(△は減少)	Increase (Decrease) in Accounts Payable-Other	84,617	△ 4,062	7,798	15,641	29,804
未払費用の増減額(△は減少)	Increase (Decrease) in Accrued Expenses	△ 2,349	18,375	13,564	16,327	△ 34,065
未払消費税等の増減額(△は減少)	Increase (Decrease) in Accrued Consumption Taxes	92,631	10,251	26,007	457,288	△ 116,840
前払費用の増減額(△は増加)	Decrease (Increase) in Prepaid Expenses	3,699	△ 8,836	△ 6,284	△ 20,986	△ 9,588
破産更正債権等の増減額(△は増加)	Decrease (increase) in Claims Provable in Bankruptcy, Claims Provable in Rehabilitation	—	—	△ 212,606	30,916	131
その他	Other	27,266	△ 6,828	△ 13,789	27,931	38,791
小計	Subtotal	2,230,569	2,399,907	3,566,969	4,172,437	5,113,597
利息及び配当金の受取額	Interest and Dividends Income Received	24,738	26,219	31,279	30,261	27,917
利息の支払額	Interest Expenses Paid	△ 276,786	△ 235,260	△ 268,204	△ 266,282	△ 298,317
法人税等の支払額	Income Taxes Paid	△ 509,367	△ 704,203	△ 652,435	△ 781,996	△ 615,475
訴訟和解金の支払額	Litigation Settlement Paid	—	—	—	△ 44,100	—
その他の支出	Other Payments	△ 1,500	—	—	—	—
営業活動によるキャッシュ・フロー	Net Cash Provided by (Used in) Operating Activities	1,467,654	1,486,662	2,677,609	3,110,320	4,227,722

財務諸表（連結） FINANCIAL STATEMENTS (CONSOLIDATED)

キャッシュ・フロー計算書 STATEMENTS OF CASH FLOWS

(千円) (Thousand Yen)

決算期	FISCAL YEAR	2012/ 3	2013/ 3	2014/ 3	2015/ 3	2016/ 3
II 投資活動によるキャッシュ・フロー		II Net Cash Provided by (Used in) Investing Activities				
定期預金の預入による支出	Payments into time deposits	—	—	—	—	△ 107,500
定期預金の払戻による収入	Proceeds from withdrawal of time deposits	—	—	—	—	304,005
有形固定資産の取得による支出	Purchase of Property, Plant and Equipment	△ 517,457	△ 621,607	△ 675,492	△ 479,212	△ 1,077,900
無形固定資産の取得による支出	Purchase of Intangible Assets	△ 16,880	△ 28,474	△ 30,543	△ 27,942	△ 25,848
投資有価証券の取得による支出	Purchase of Investment Securities	△ 9,796	△ 10,042	△ 109,182	△ 10,993	△ 12,207
投資有価証券の売却による収入	Proceeds from Sales of Investment Securities	—	—	54,045	15,519	30,683
子会社株式の取得による支出	Purchase of shares of subsidiaries	—	△ 22,500	—	—	—
連結の範囲の変更を伴う 子会社株式の取得による支出	Purchase of shares of subsidiaries resulting in change in scope of consolidation	△ 363,302	—	△ 687,194	—	△ 778,198
その他	Other	2,156	2,175	37,848	9,905	33,079
投資活動によるキャッシュ・フロー	Net Cash Provided by (Used in) Investing Activities	△ 905,280	△ 680,449	△ 1,410,519	△ 492,723	△ 1,633,885
III 財務活動によるキャッシュ・フロー		III Net Cash Provided by (Used in) Financing Activities				
短期借入金の純増減額（△は減少）	Net increase (decrease) in short-term loans payable	—	—	—	—	270,000
長期借入れによる収入	Proceeds From Long-Term Loans Payable	4,050,000	3,741,000	4,670,000	3,750,000	5,220,000
長期借入金の返済による支出	Repayment of Long-Term Loans Payable	△ 3,662,130	△ 4,096,340	△ 5,101,056	△ 3,808,564	△ 4,091,586
配当金の支払額	Cash Dividends Paid	△ 250,737	△ 332,754	△ 495,598	△ 534,591	△ 534,625
リース債務の返済による支出	Repayments of Lease Obligations	△ 250,779	△ 319,892	△ 529,534	△ 682,467	△ 837,302
長期設備未払金の支払いによる支出	Payments for Accrued amount payable for Capital Investment	—	—	—	—	△ 547,718
株式の発行による収入	Proceeds from issuance of common shares	—	—	1,634,528	—	—
社債の償還による支出	Redemption of bonds	—	—	—	—	△ 67,000
その他	Other	—	△ 14	—	—	—
財務活動によるキャッシュ・フロー	Net Cash Provided by (Used in) Financing Activities	△ 113,647	△ 1,008,001	178,338	△ 1,275,623	△ 588,232
IV 現金及び現金同等物の増減額(△は減少)	IV Net Increase (Decrease) in Cash and Cash Equivalents	448,726	△ 201,788	1,445,429	1,341,972	2,005,604
V 現金及び現金同等物の期首残高	V Cash and Cash Equivalents at Beginning of Period	6,499,918	6,948,645	6,746,856	8,192,285	9,534,258
VI 現金及び現金同等物の期末残高	VI Cash and Cash Equivalents at End of Period	6,948,645	6,746,856	8,192,285	9,534,258	11,539,862

会社概要 CORPORATE INFORMATION

2016年3月31日現在 / As of March 31, 2016

▼CORPORATE INFORMATION

TRADE NAME Kyoritsu Printing Co.,Ltd.
ESTABLISHED August 1st, 1980
CAPITAL 3,335,810,000 Yen
NUMBER OF FULL-TIME EMPLOYEES 880
STOCK EXCHANGE LISTED The First Section of the Tokyo Stock Exchange [7838]
NUMBER OF SHAREHOLDERS 9,975

HEAD OFFICE 36-1, Shimizu-cho, Itabashi-ku, Tokyo
03-5248-7800

OFFICE Sapporo / Nagoya / Osaka / Takamatsu / Fukuoka
PRINTING FACTORY Honjo First Factory / Honjo Second Factory
Honjo Third Factory

BINDING FACTORY Binding First Factory / Binding Second Factory
Binding Third Factory / Binding Fourth Factory



▼OFFICERS

CEO Katsunori Noda
COO Takashi Kuramochi
DIRECTOR Tetsuo Nakai
DIRECTOR Shoya Sato
STANDING AUDITOR Kenzo Kawaziri
AUDITOR Hidekazu Kubokawa
Jun Kimura

EXECUTIVE OFFICER Toshikatsu Funaki
Noriaki Tajima

▼会社概要

商号 共立印刷株式会社
設立 1980年8月1日
資本金 33億3,581万円
従業員数 880名
上場取引所 東京証券取引所 市場第一部 [7838]
株主数 9,975名

本社 東京都板橋区清水町36番1号
03-5248-7800

営業所 札幌 / 名古屋 / 大阪 / 高松 / 福岡
印刷工場 本庄第1工場 / 本庄第2工場
本庄第3工場

製本工場 製本第1工場 / 製本第2工場
製本第3工場 / 製本第4工場

▼役員

代表取締役会長 野田 勝憲
代表取締役社長 倉持 孝
取締役 中井 哲雄
取締役 佐藤 尚哉
常勤監査役 川尻 建三
監査役 窪川 秀一
木村 純

執行役員 船木 敏勝
田島 紀明